



Fishing activities Gears Fishermen Fishing industry Of Bangladesh



Bangladesh is considered one of the most suitable regions for fisheries in the world, with the world's largest flooded wetland and the THIRD LARGEST aquatic biodiversity in Asia after China and India.

Aquaculture Production

Rank	Country	Annual Aquaculture Harvest
1	China	58.8 million metric tons
2	Indonesia	14.4 million metric tons
3	India	4.9 million metric tons
4	Vietnam	3.4 million metric tons
5	Philippines	2.3 million metric tons
6	Bangladesh	2.0 million metric tons
7	South Korea	1.6 million metric tons
8	Norway	1.3 million metric tons
9	Chile	1.2 million metric tons
10	Egypt	1.1 million metric tons
11	Japan	1.0 million metric tons
12	Myanmar	0.96 million metric tons
13	Thailand	0.93 million metric tons
14	Brazil	0.56 million metric tons
15	Malaysia	0.52 million metric tons

(FRSS, 2016 FRSS. (2015). Fisheries resources survey system (FRSS), fisheries statistical report of Bangladesh (vol. 31, pp. 1e57). Bangladesh: Department of Fisheries.)

Categories:

1. Inland capture fisheries
2. Inland aquaculture
(contributing more than 55% of the total production (DoF, 2016))
3. marine fisheries

1,023,991 MT : Inland
2,060,408 MT : Aquaculture
599,846 : Marine



District-wise inland closed water (culture) fisheries production

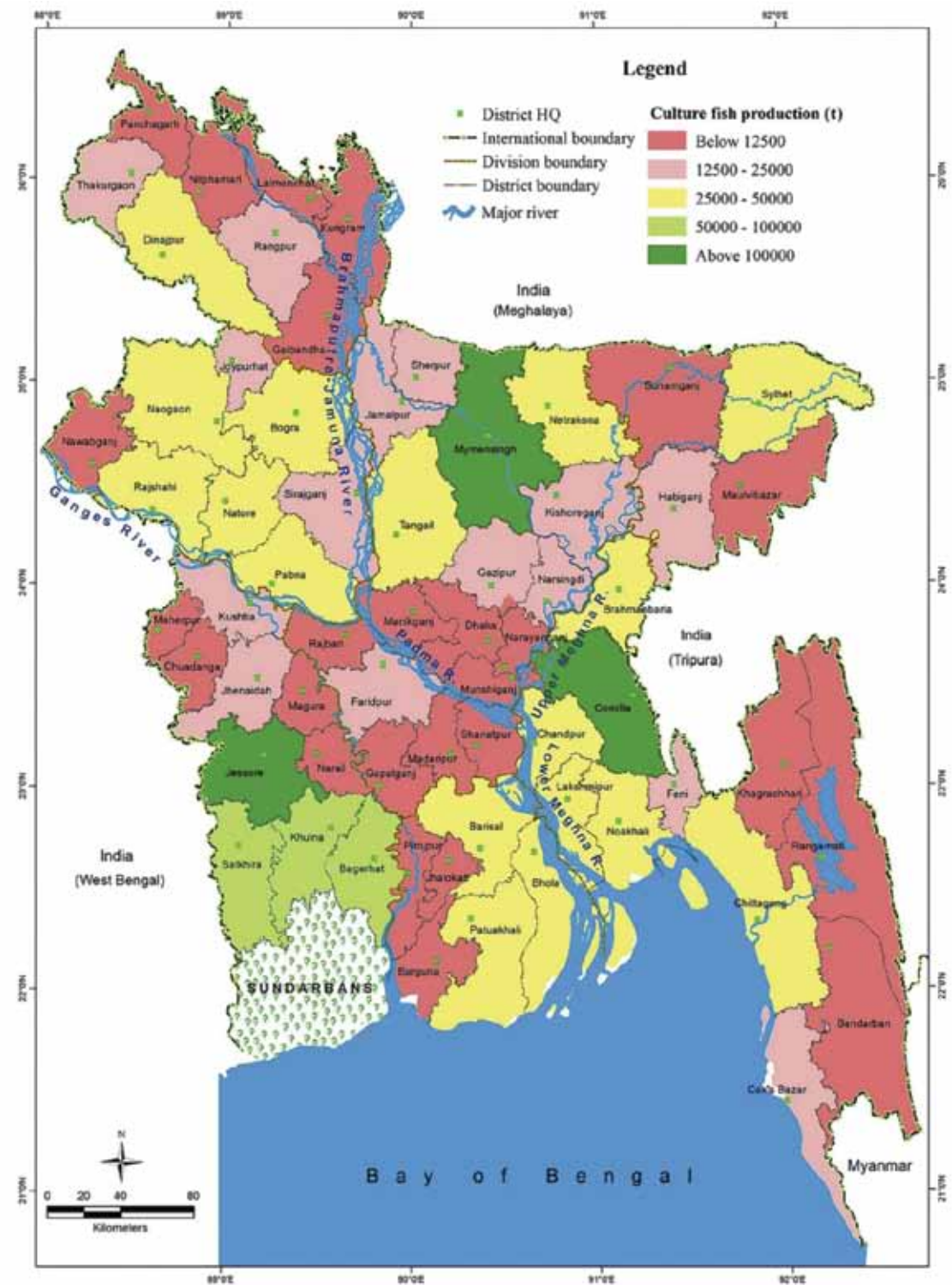


Fig. 5. District-wise inland closed water (culture) fisheries production (Source: FRSS, 2015).



Employment

17.80M (full time & part time) 11% of total population

Women employment 1.40 M (8.5% of fisheries sector employment)

Source: Department of Fisheries FRSS Report, 2015

Last 10 years average growth rate of fisheries is 5.4% Where aquaculture shows the growth performance of 8.2%



Sector-wise Annual Fish Production 2014-15

Sector of Fisheries	Water Area (Ha)	Production (MT)	%
A. Inland Fisheries			
(i) Inland Open Water (Capture)			
1. River and Estuary	853863	174878	4.75%
2. Sundarbans	177700	17580	0.48%
3. Beel	114161	92678	2.52%
4. Kaptai Lake	68800	8645	0.23%
5. Floodplain	2692964	730210	19.82%
Capture Total	3907488	1023991	27.79%

Sector-wise Annual Fish Production 2014-15.....

Sector of Fisheries	Water Area (Ha)	Production (MT)	%
(ii) Inland Closed Water (Culture)			
6. Pond	377968	1610875	43.72%
7. Seasonal cultured water body	133330	201280	5.46%
8. Baor (Oxbow lakes)	5488	7267	0.20%
9. Shrimp/Prawn Farm	275583	223582	6.07%
10. Pen Culture	8326	16084	0.44%
11. Cage Culture	10	1969	0.05%
Culture Total	800705	2061057	55.93%
Inland Fisheries Total	4708193	3085048	83.72%
B. Marine Fisheries			
12. Industrial (Trawl)		84846	2.30%
13. Artisanal		515000	13.98%
Marine Fisheries Total		599846	16.28%
COUNTRY TOTAL		3684894	100%



Traditional fishing of Bangladesh



Traditional fishing of Bangladesh



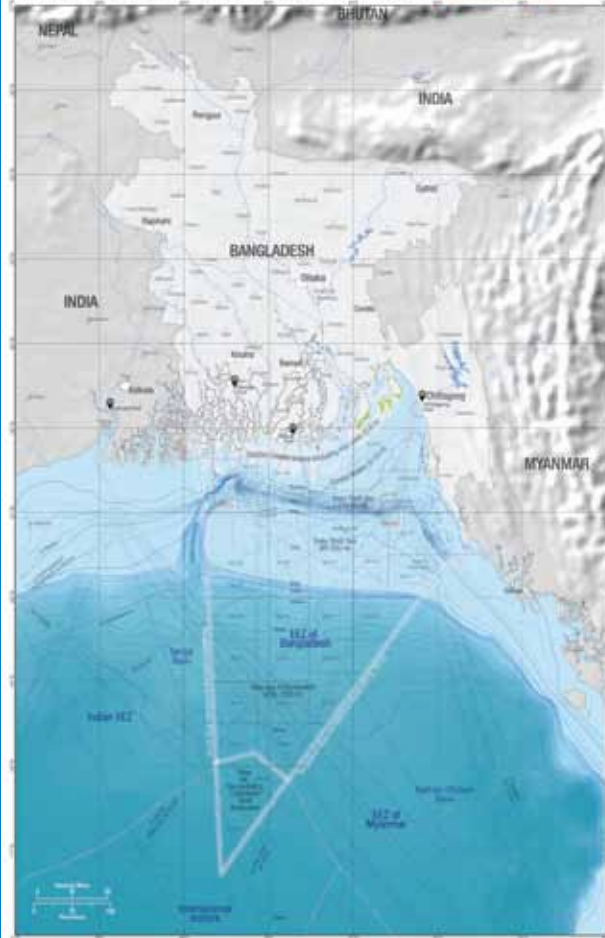
Aquaculture in Bangladesh

MARITIME PROVINCE OF BANGLADESH

With new features, fresh analyses and updated statistics for Blue Economic Policy

Second Edition

INSTITUTE OF MARINE SCIENCES AND FISHERIES
UNIVERSITY OF CHITTAGONG
CHITTAGONG-4301, BANGLADESH



Shallow Coastal Waters (including river inlets) (0-5 m)

Coastal Waters (5-10 m)

Inner Shelf Sea (10-80 m)

Outer Shelf Sea (80-200 m)

Deep sea of Bangladesh (200-2200 m)

Area for Bangladesh's Continental Shelf declaration

Area for Bangladesh's Exclusive Economic Zone (EEZ) declaration

Area for Bangladesh's Exclusive Economic Zone (EEZ) declaration

Area for Bangladesh's Exclusive Economic Zone (EEZ) declaration

Area for Bangladesh's Exclusive Economic Zone (EEZ) declaration

Area for Bangladesh's Exclusive Economic Zone (EEZ) declaration

Area for Bangladesh's Exclusive Economic Zone (EEZ) declaration

Area for Bangladesh's Exclusive Economic Zone (EEZ) declaration

Area for Bangladesh's Exclusive Economic Zone (EEZ) declaration

Area for Bangladesh's Exclusive Economic Zone (EEZ) declaration

Area for Bangladesh's Exclusive Economic Zone (EEZ) declaration

Area for Bangladesh's Exclusive Economic Zone (EEZ) declaration

Area for Bangladesh's Exclusive Economic Zone (EEZ) declaration

Area for Bangladesh's Exclusive Economic Zone (EEZ) declaration

Area for Bangladesh's Exclusive Economic Zone (EEZ) declaration

Area for Bangladesh's Exclusive Economic Zone (EEZ) declaration

Area for Bangladesh's Exclusive Economic Zone (EEZ) declaration

Area for Bangladesh's Exclusive Economic Zone (EEZ) declaration

Area for Bangladesh's Exclusive Economic Zone (EEZ) declaration

Area for Bangladesh's Exclusive Economic Zone (EEZ) declaration

Area for Bangladesh's Exclusive Economic Zone (EEZ) declaration

Area for Bangladesh's Exclusive Economic Zone (EEZ) declaration

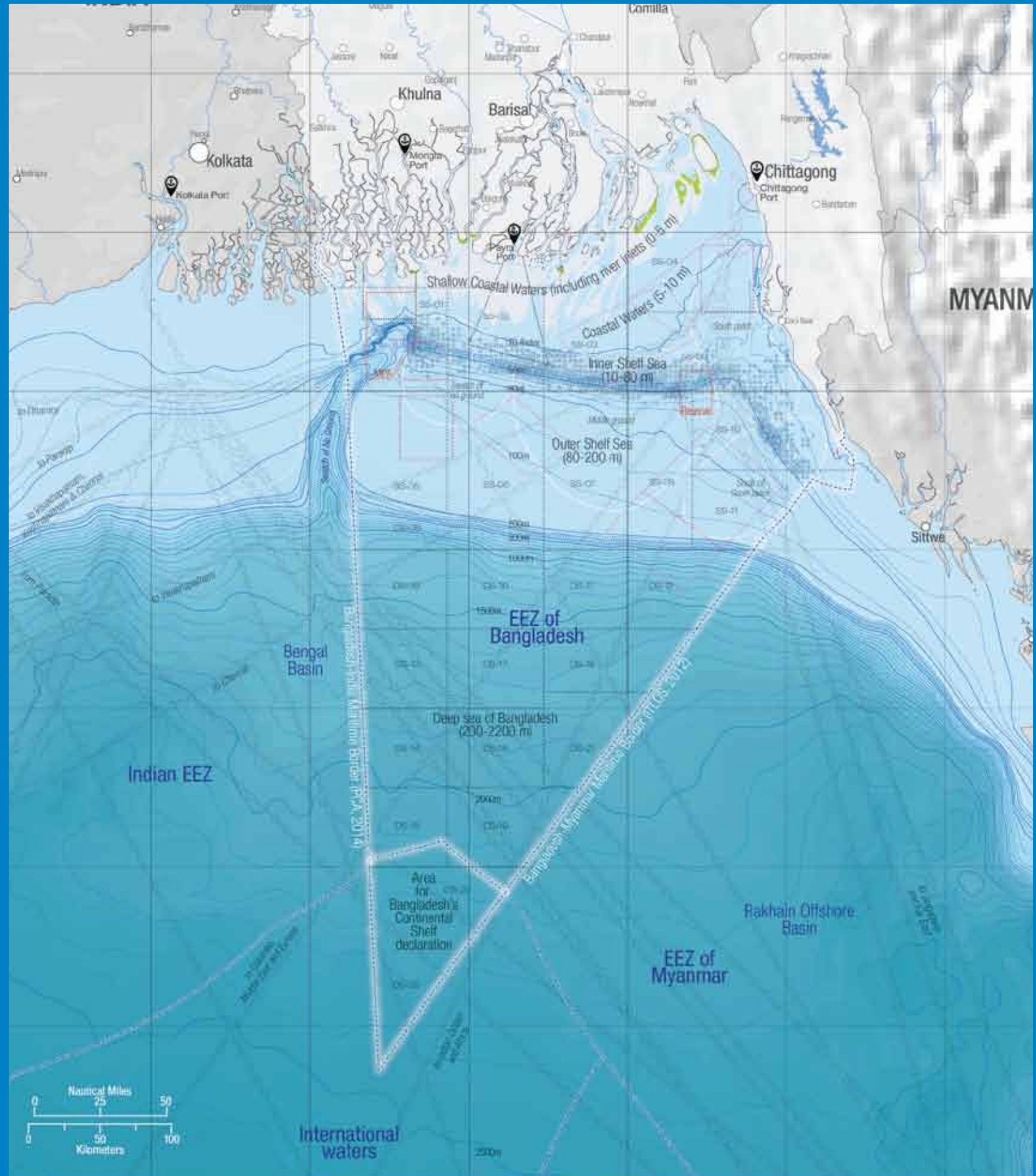
Area for Bangladesh's Exclusive Economic Zone (EEZ) declaration

Area for Bangladesh's Exclusive Economic Zone (EEZ) declaration

Area for Bangladesh's Exclusive Economic Zone (EEZ) declaration

Area for Bangladesh's Exclusive Economic Zone (EEZ) declaration

Area for Bangladesh's Exclusive Economic Zone (EEZ) declaration



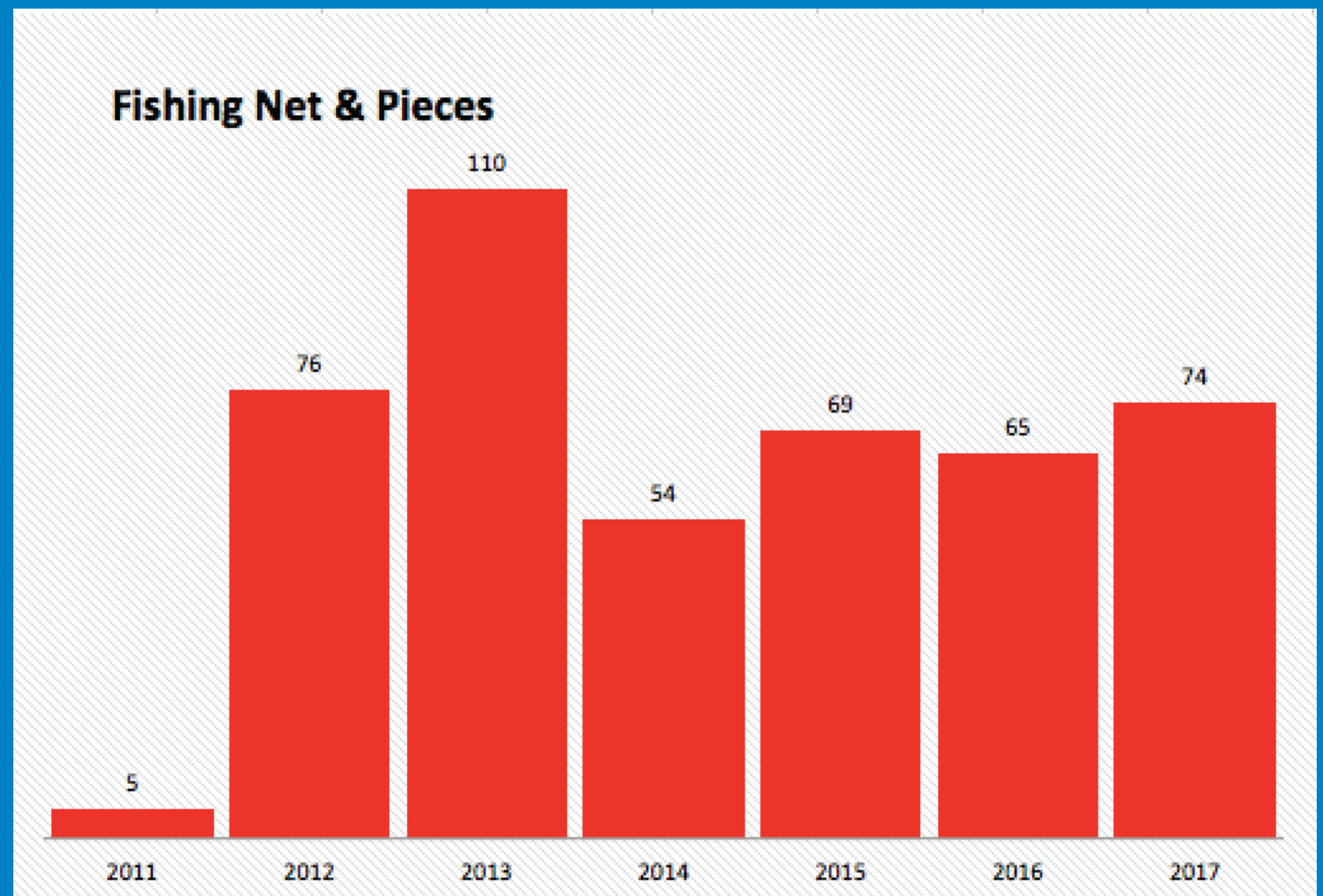
Marine Fisheries Resources

- Marine Water (Territorial) 9,060 km
- Maritime Boundary 118,813 km
- Coast line 710 km

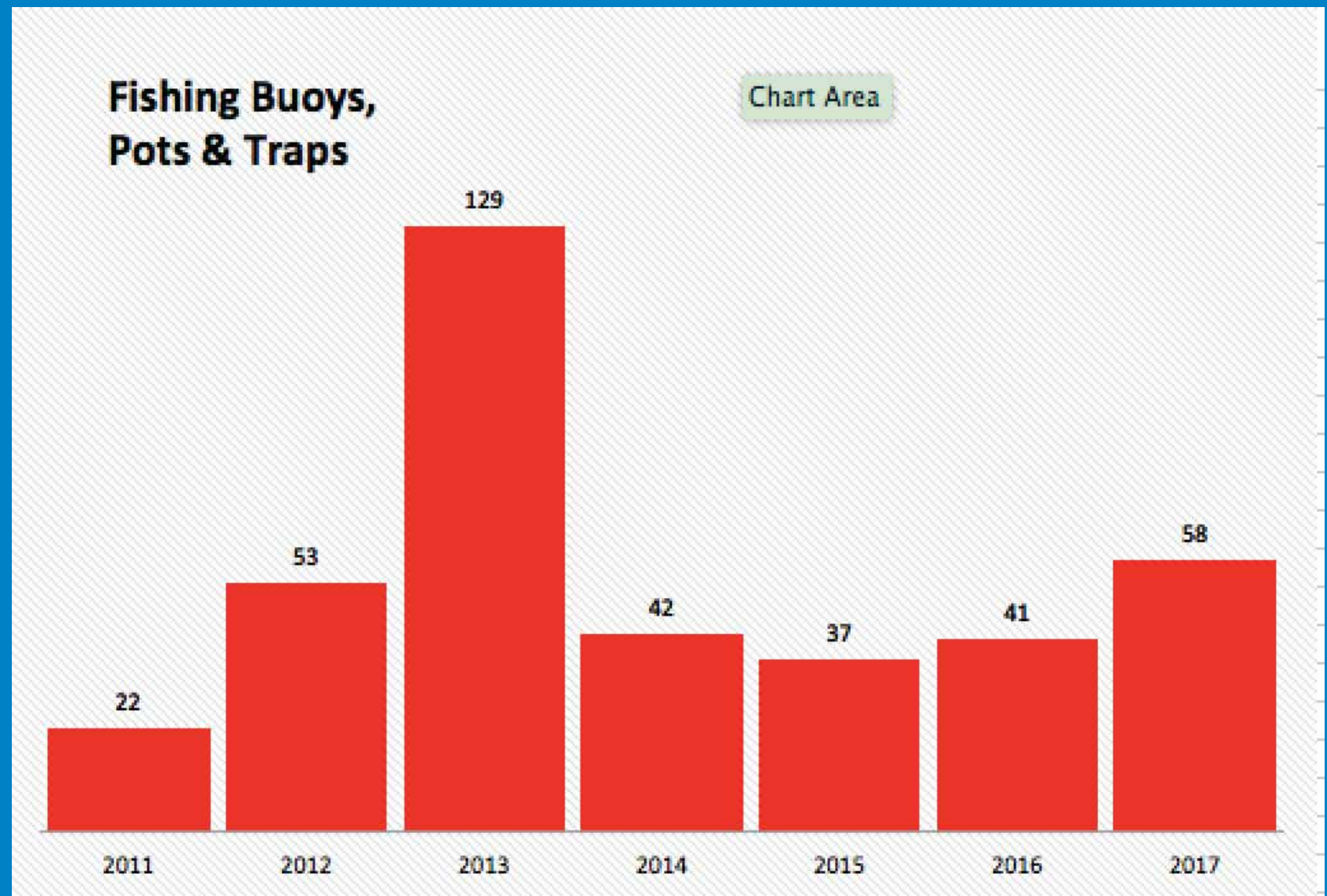
207 industrial trawlers* of which 24 are mid water
Around 68 thousand mechanized and non mechanized boats
Marine fisherman: > 0.5 million

*<http://mmd.gov.bd/fishing-trawlers/>

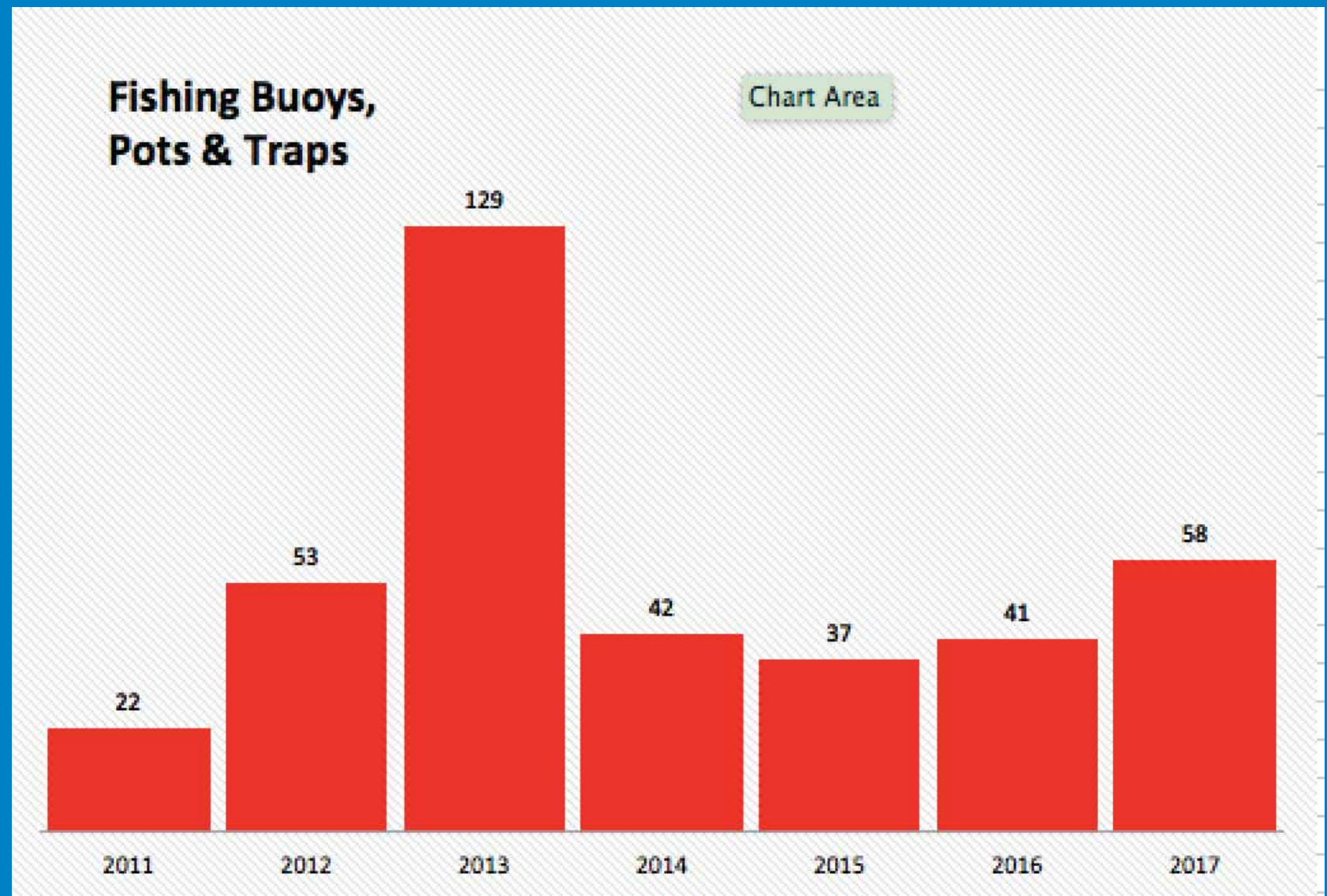
Derelict fishing gears



Derelict fishing gears



Derelict fishing gears



Derelict fishing gears

