

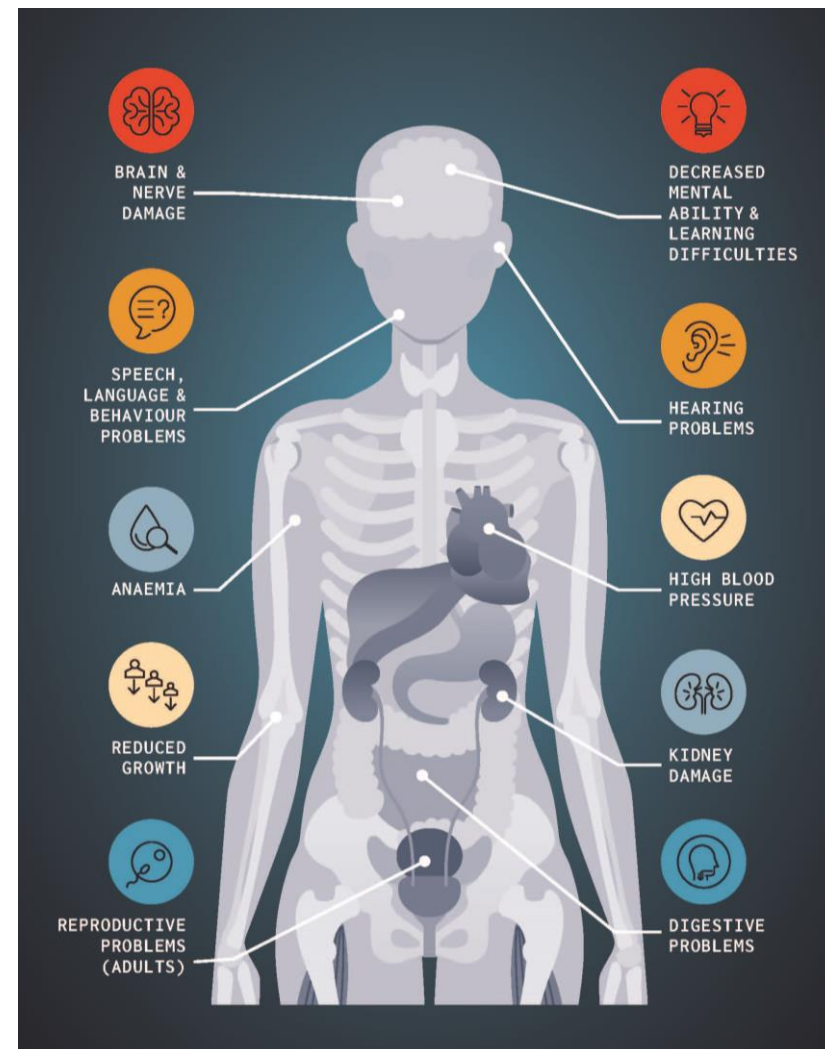
Health impacts of lead & ILPPW update



World Health
Organization

Lead is an important cause of disease

- No known threshold for toxic effects
- Affects many body systems
- Particularly harmful to developing nervous system in young children
- Young children have a high risk of exposure because of hand-to-mouth behaviour
- In pregnant women, lead harms the foetus



Lead causes significant burden of disease

Institute for Health Metrics & Evaluation estimations (2017)

- 540 000 deaths from long-term effects
- 13.9 million disability adjusted life years (DALYs)
- 64% of the global burden of idiopathic developmental intellectual disability
- 6% of the global burden of hypertensive heart disease
- 3% of the global burden of stroke

<https://vizhub.healthdata.org/gbd-compare/>

Economic costs of lead exposure are high

- Estimated economic losses due to reduced IQ from preventable lead exposure is ~1.2% of global GDP
- Largest economic burden is borne by low and middle income countries.
- Economic losses by region (in international dollars):
 - Africa: I\$ 134.7 billion
 - Asia: I\$ 699.9 billion
 - LAC: I\$ 142.3 billion
 - USA: I\$ 50.9 billion

Attina & Trasande. 2013 <http://dx.doi.org/10.1289/ehp.1206424>

Lead paint is an important source of lead exposure

- Children are exposed when lead paint is used in homes, playgrounds & on toys
 - In France, 74% of children with elevated blood lead concentrations live in homes with lead paint
- Adult exposures can occur during manufacturing, applying and removing paint



Costs of not banning lead paint are high

- Estimated costs of remediating lead-painted homes:
 - France: US\$ 194 – 499 million
 - USA: US\$ 1 – 11 billion
- Cost-benefit of remediation significant
 - each US\$ 1 invested in lead paint hazard control yields return of US\$ 17–221

Pichery et al 2011. <https://ehjournal.biomedcentral.com/articles/10.1186/1476-069X-10-44>

Gould 2009. <http://ehp.niehs.nih.gov/0800408/>



International Lead Poisoning Prevention Week

22-28 OCTOBER 2017

Learn the Risks

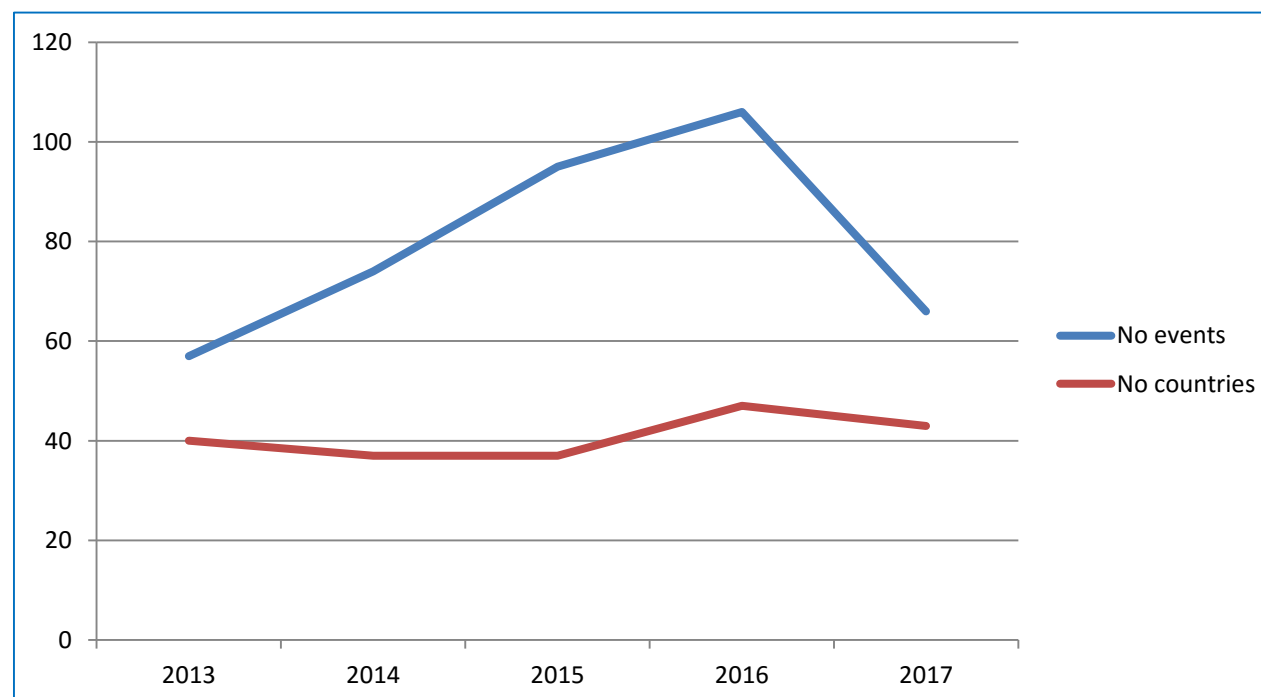
Educate Your Community

Ban Lead Paint

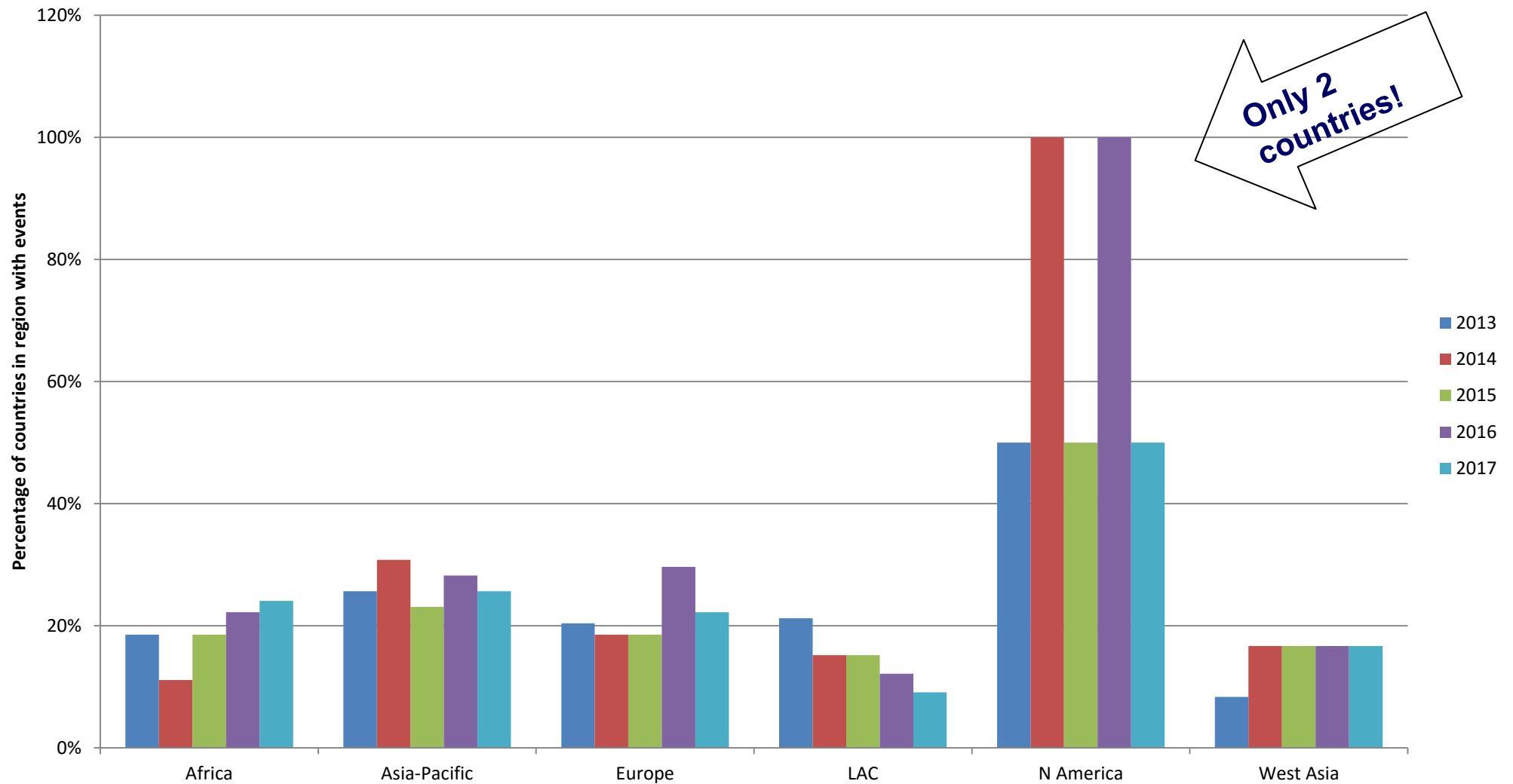
Global Alliance to
Eliminate Lead Paint

ILPPW 2017- good country engagement

- 66 events in 43 countries
- Fewer events than in 2016 partly because 33 fewer events registered from USA



ILPPW – varying level of activity in regions



NGOs very active

