

Orientations for Regional Cooperation for MSP - West Indian Ocean

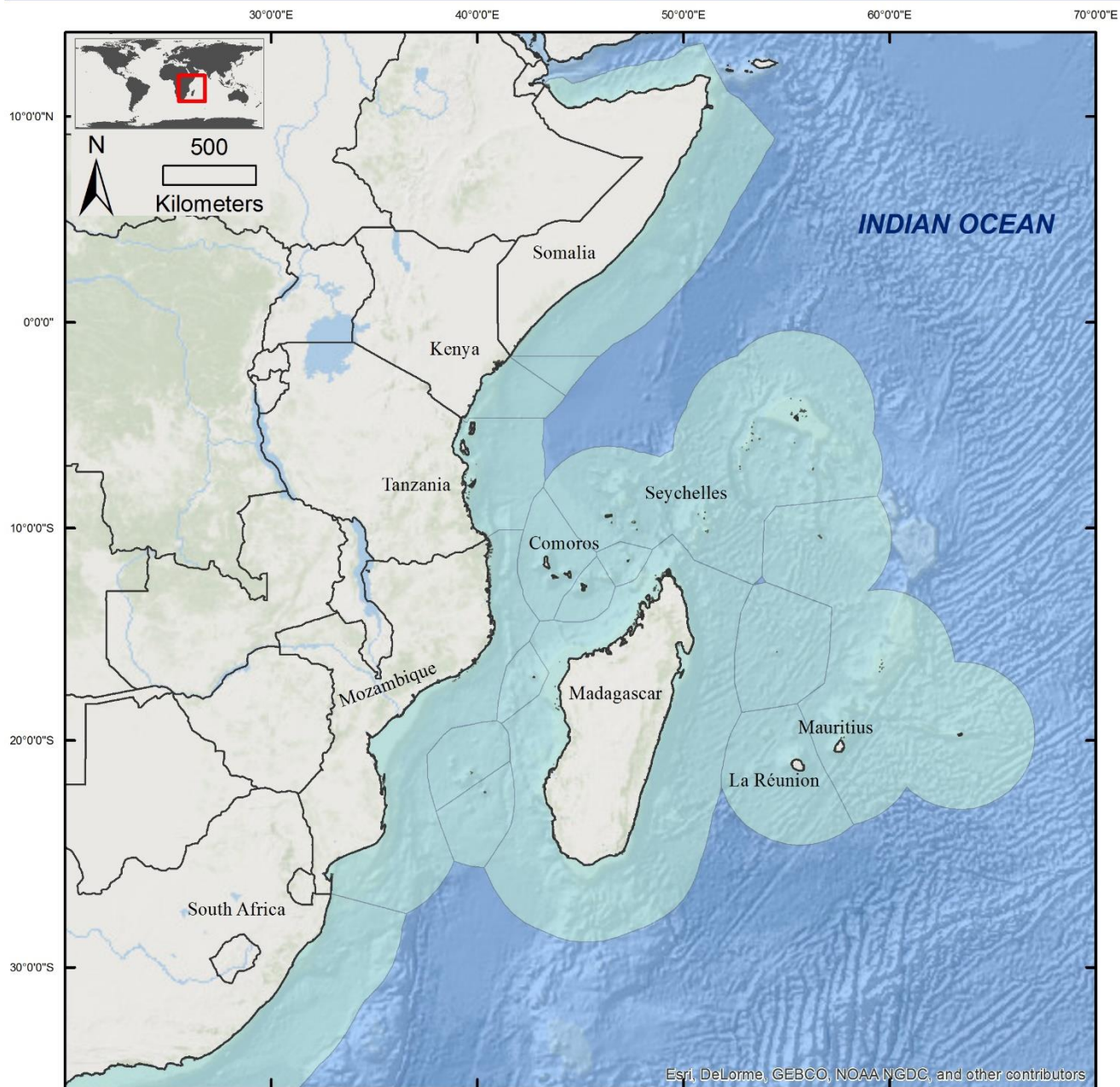


Seychelles – 13-15 November, 2017



MASPAWIO

Exclusive Economic Zone boundaries



LEGEND:



EEZ

**STRUCTURING
MARITIME
SPACE ...
AN OLD
QUESTION ...**

DATA SOURCES:

VLIZ (2014). Maritime Boundaries Geodatabase, version 8. Available online at <http://www.marineregions.org/>. Consulted on 2015-05-11.

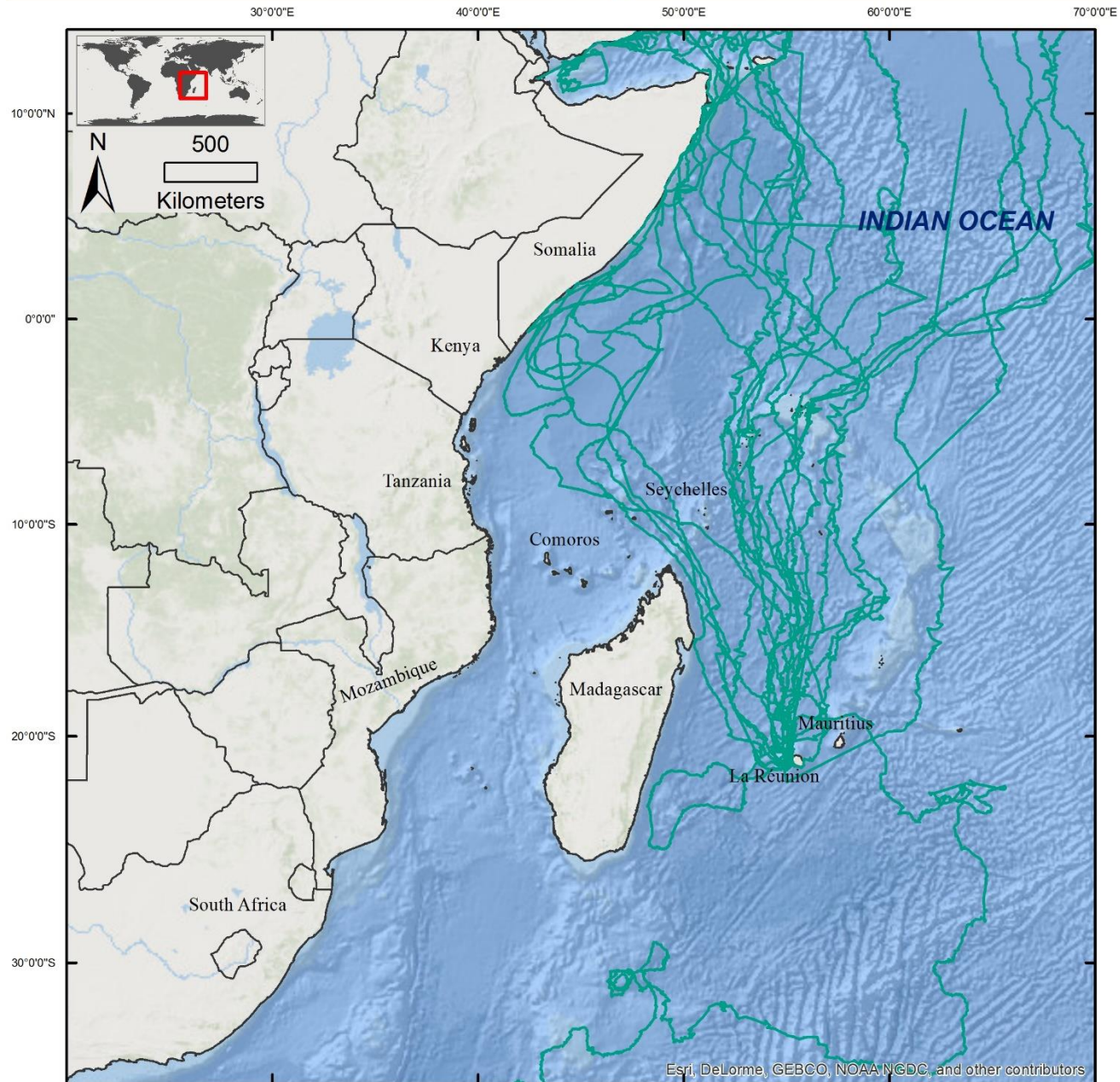
Author : E. Crochelet - Date: 12/2015 - Map n° PIP-3-1



Esri, DeLorme, GEBCO, NOAA NGDC, and other contributors

Movement of juvenile loggerhead sea turtles from Reunion Island (2014-2015)

**BEYOND
NATIONAL
BOUNDARIES**



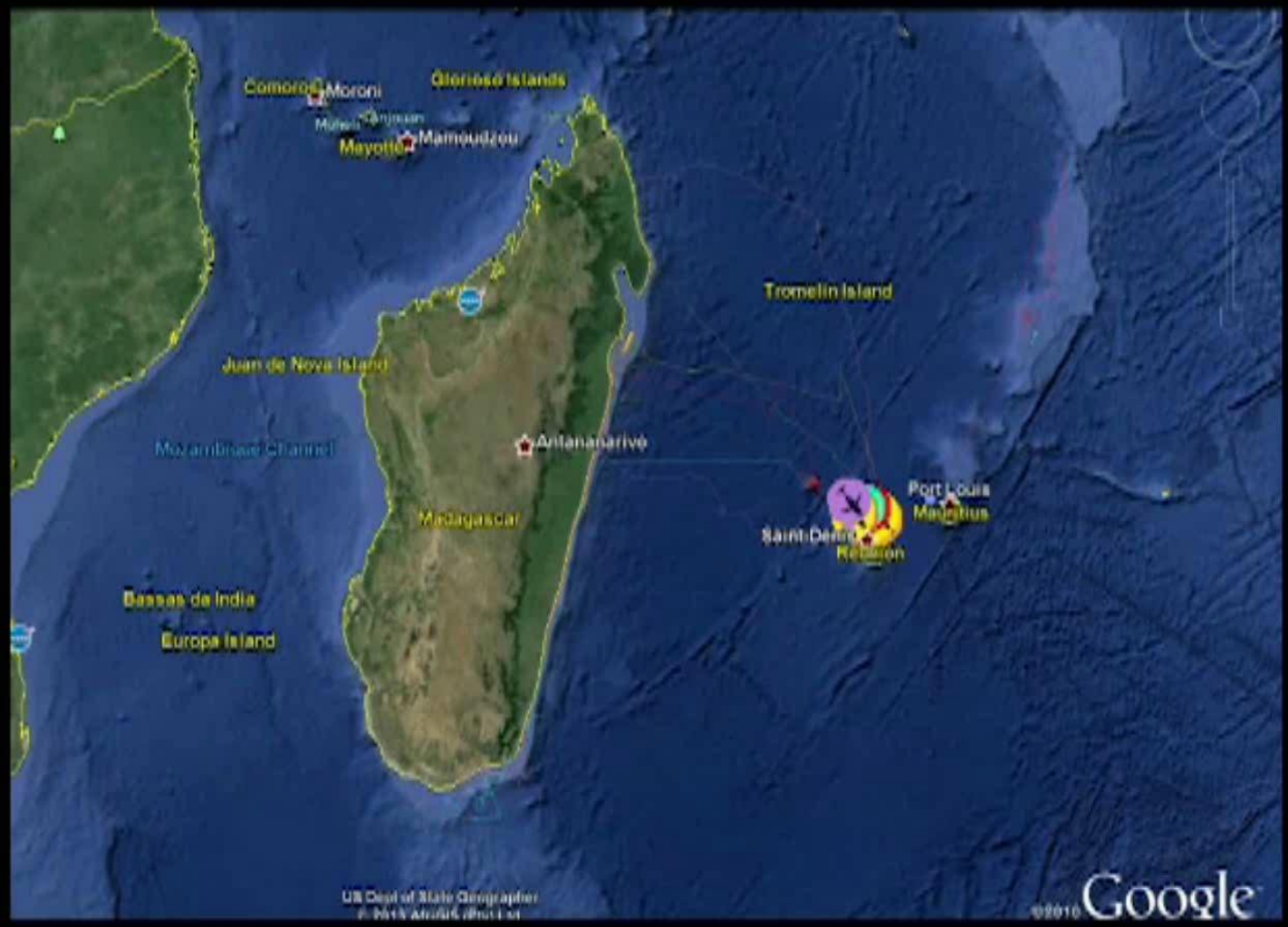
DATA SOURCES:

Ifremer/Kélonia/CLS. COCA LOCA project. Suivis de Tortues Caouannes par balises Argos. Funding: AFD, BEST, Union Européenne. Management: IUCN. From Dalleau et al. 2014.

Author : E. Crochelet - Date: 12/2015 - Map n° SPEC-5-7

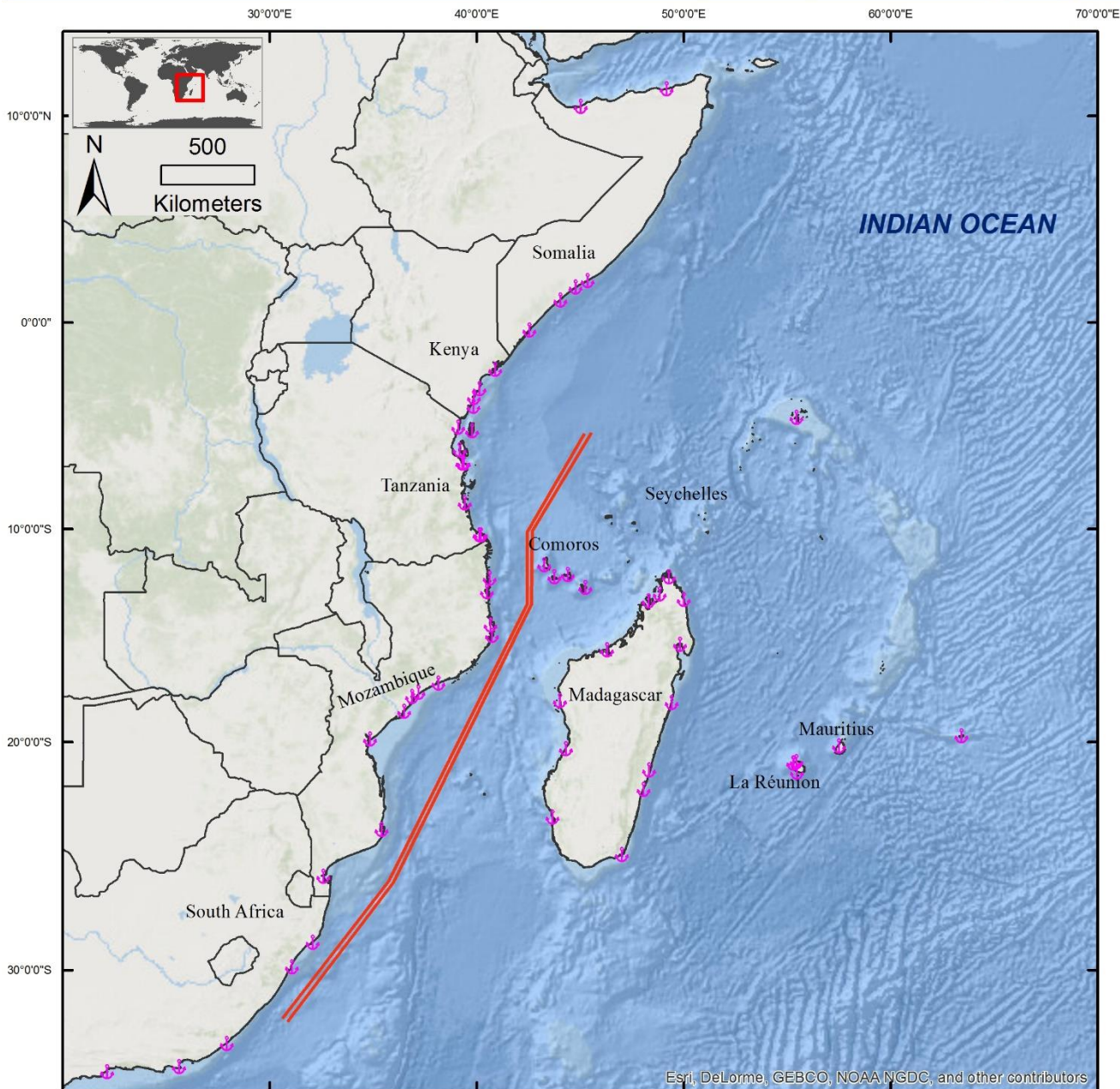


BEYOND NATIONAL BOUNDARIES



Western Indian Ocean Marine Highway

BEYOND NATIONAL BOUNDARIES



LEGEND:

-  Ports
-  Marine Highway

DATA SOURCES:

Ports: World Port Index (Pub 150)

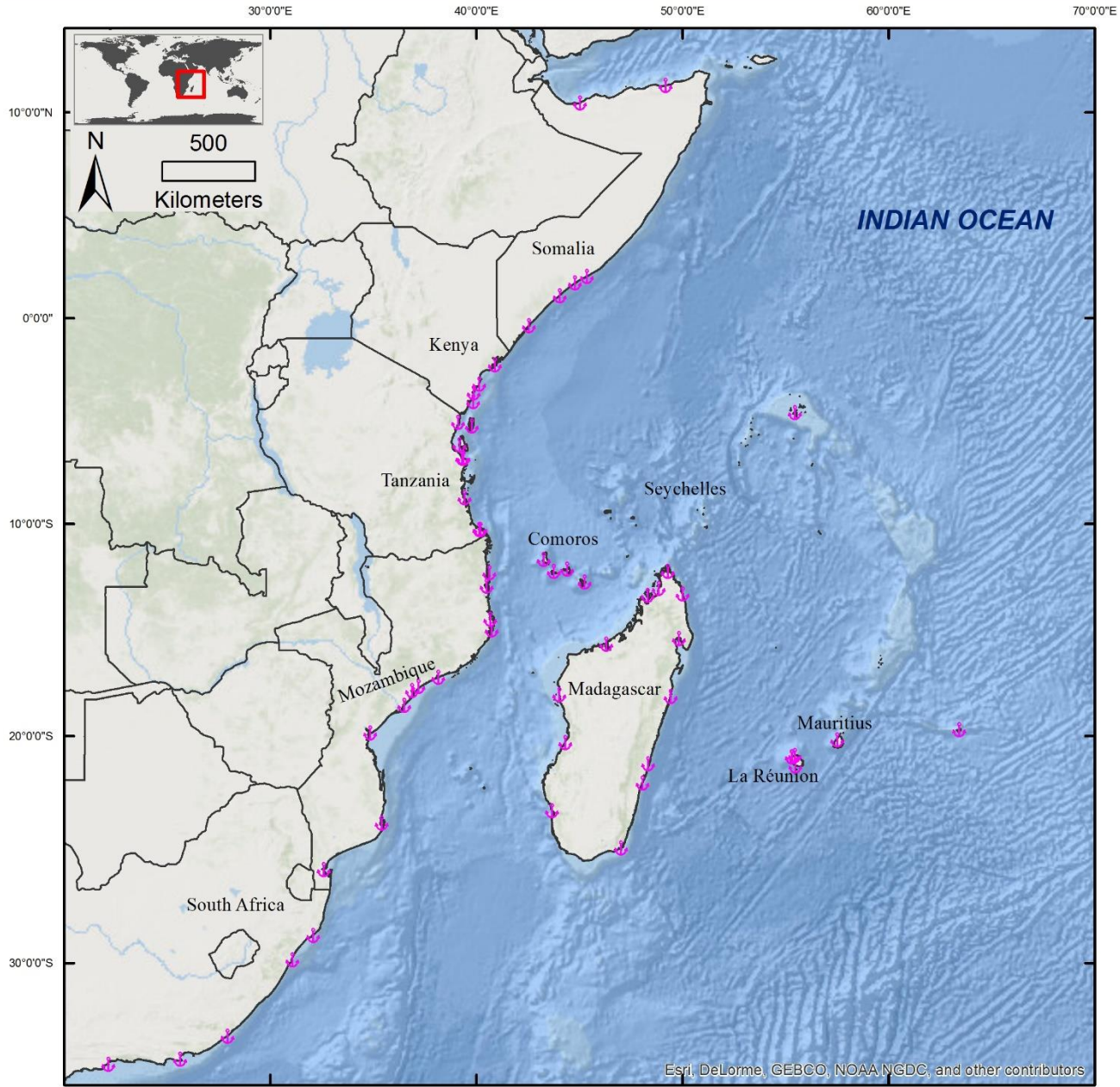
Marine Highway: Western Indian Ocean Marine Highway development and coastal and marine contamination prevention project - reproduced from "Marine Highway Indian Ocean-Project document".

Author : E. Crochelet - Date: 12/2015 - Map n° PIP-5-1



Esri, DeLorme, GEBCO, NOAA NGDC, and other contributors

Ports



LEGEND:



Ports

DATA SOURCES:

Ports: World Port Index (Pub 150).

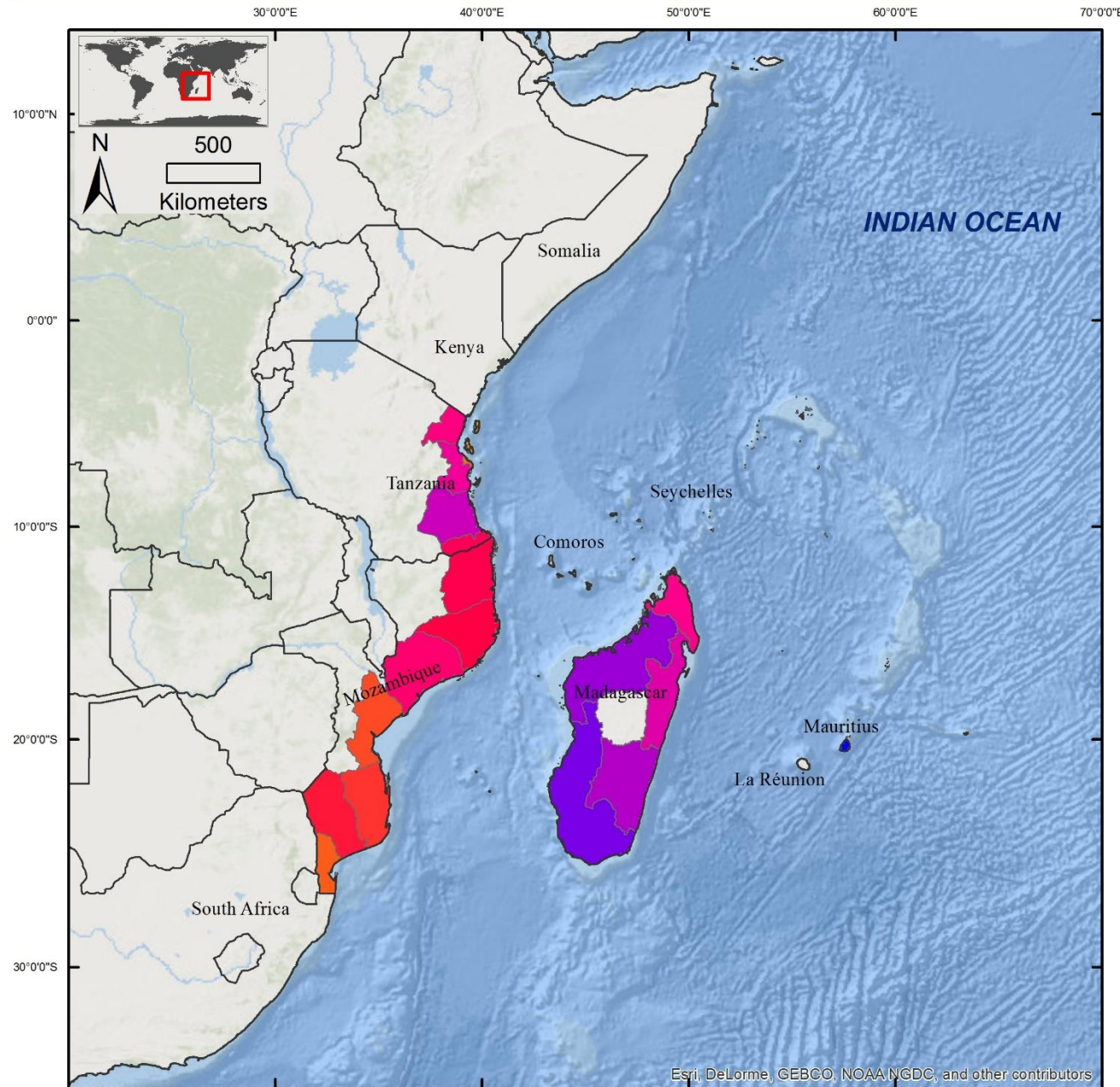
Author : E. Crochelet - Date: 12/2015 - Map n° PIP-8-1



COMMON COASTAL URBANIZATION AND INDUSTRIAL ISSUES

Marine Ecosystem Services Values - Cultural services : Coastal tourism

COMMON ECONOMIC SECTORS



LEGEND:

Distribution of coastal tourism values in the NMC region

Values are in million US \$ / year



DATA SOURCES:

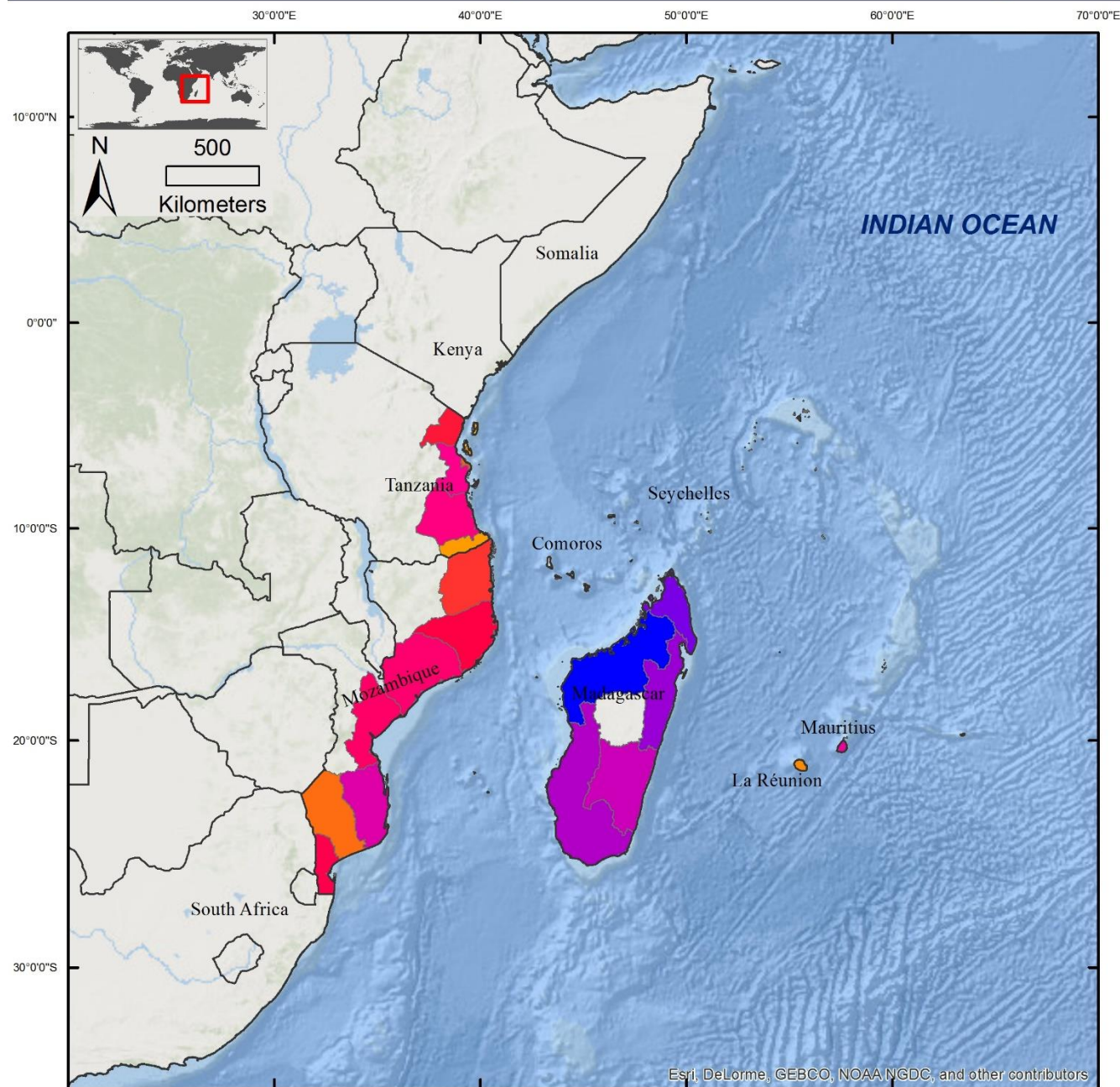
Understanding And Valuing Marine Ecosystem Services In The Northern Mozambique channel. Nunes P and Ghermandi A (2015). Consultancy report commissioned for the Northern Mozambique Channel initiative. WWF International.

Author : E. Crochelet - Date: 12/2015 - Map n° PIP-2-3



Marine Ecosystem Services Values - Provisioning services : Fisheries

COMMON ECONOMIC SECTORS



LEGEND:

Distribution of fisheries landed values in the NMC region

Values are in million US \$ / year



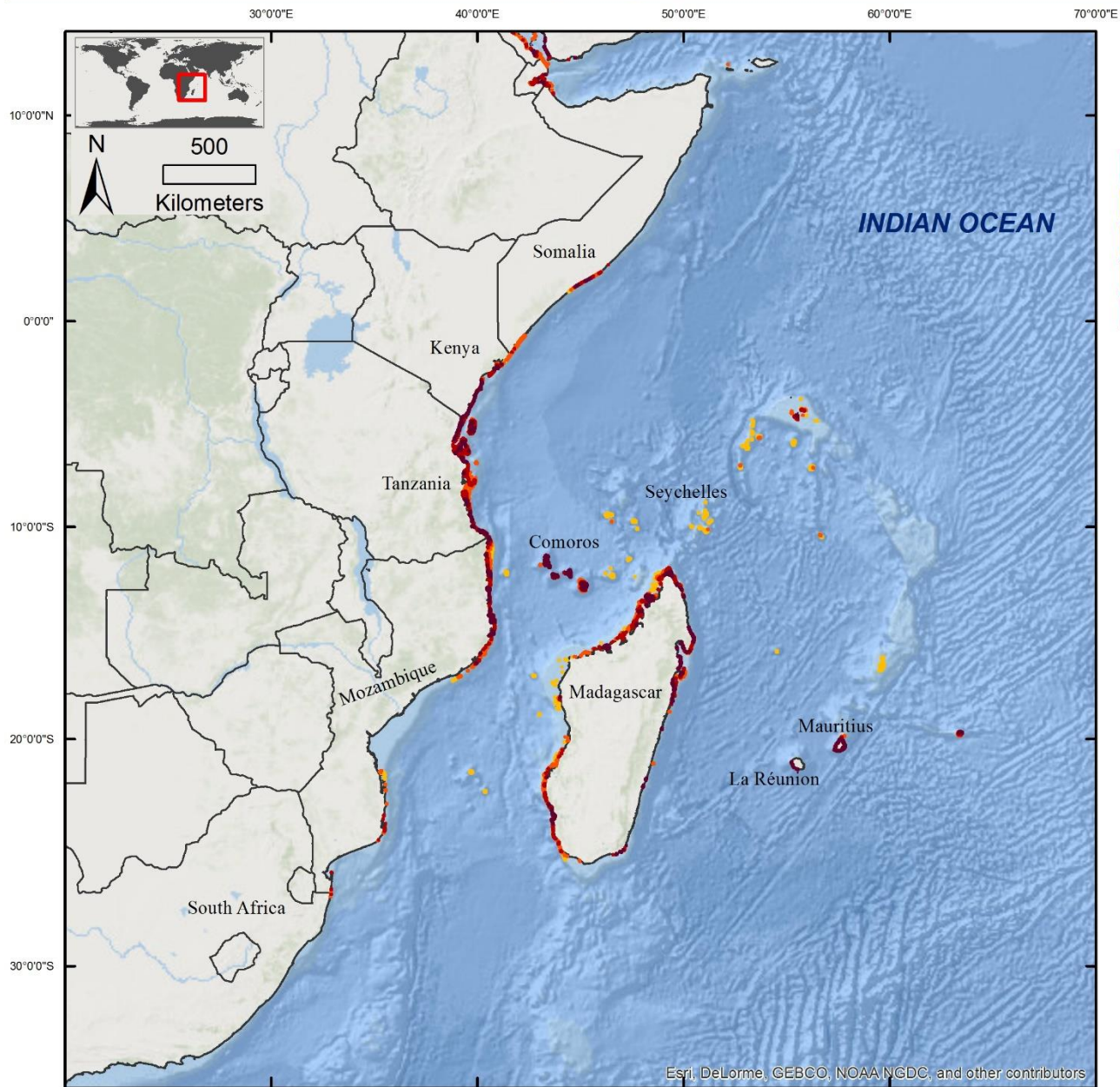
DATA SOURCES:

Understanding And Valuing Marine Ecosystem Services In The Northern Mozambique channel. Nunes P and Ghermandi A (2015). Consultancy report commissioned for the Northern Mozambique Channel initiative. WWF International.

Author : E. Crochelet - Date : 12/2015 - Map n° PIP-2-1



Reefs by Integrated Local and Global Threats in 2050



LEGEND:

Coral reefs classified by integrated local and global (climate-related) threats in 2050*

- Low
- Medium
- High
- Very high
- Critical

* Local threats include: coastal development, overfishing and destructive fishing, marine-based pollution and damage, and watershed-based pollution. Global threats include: thermal stress (ocean warming) and ocean acidification.

DATA SOURCES:

World Resources Institute, Reefs at Risk Revisited, 2011.

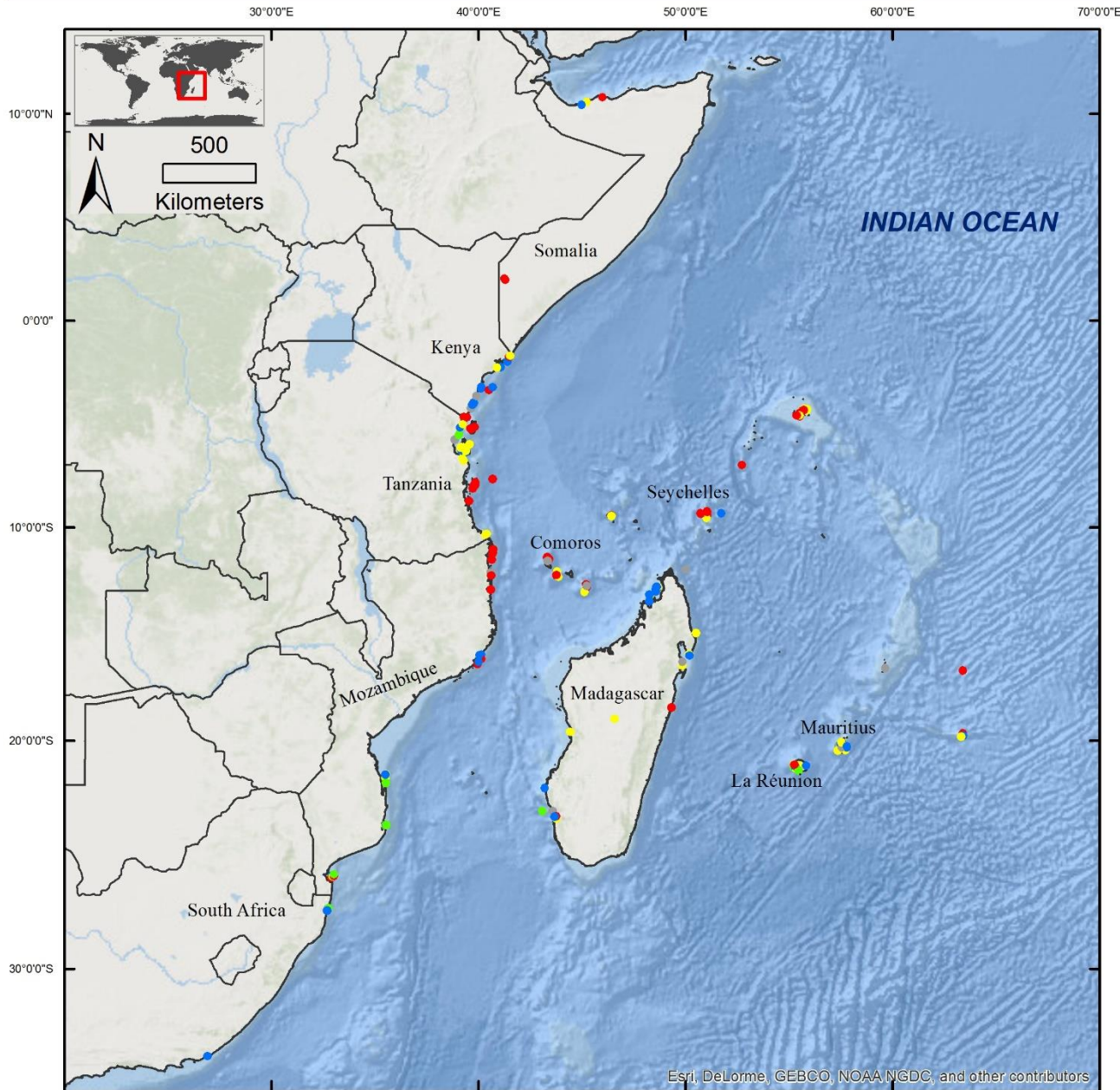
Author : E. Crochelet - Date: 12/2015 - Map n° PIP-9-3



COMMON CHALLENGES

Coral bleaching

COMMON CHALLENGES



LEGEND:

Bleaching severity

- Severity unknown (bleaching observed, but no indication of severity)
- No bleaching (confirmed no bleaching observed at location)
- Low (1-10% of corals bleached)
- Medium (~10-30% of corals bleached)
- High (>30% of corals bleached)

DATA SOURCES:

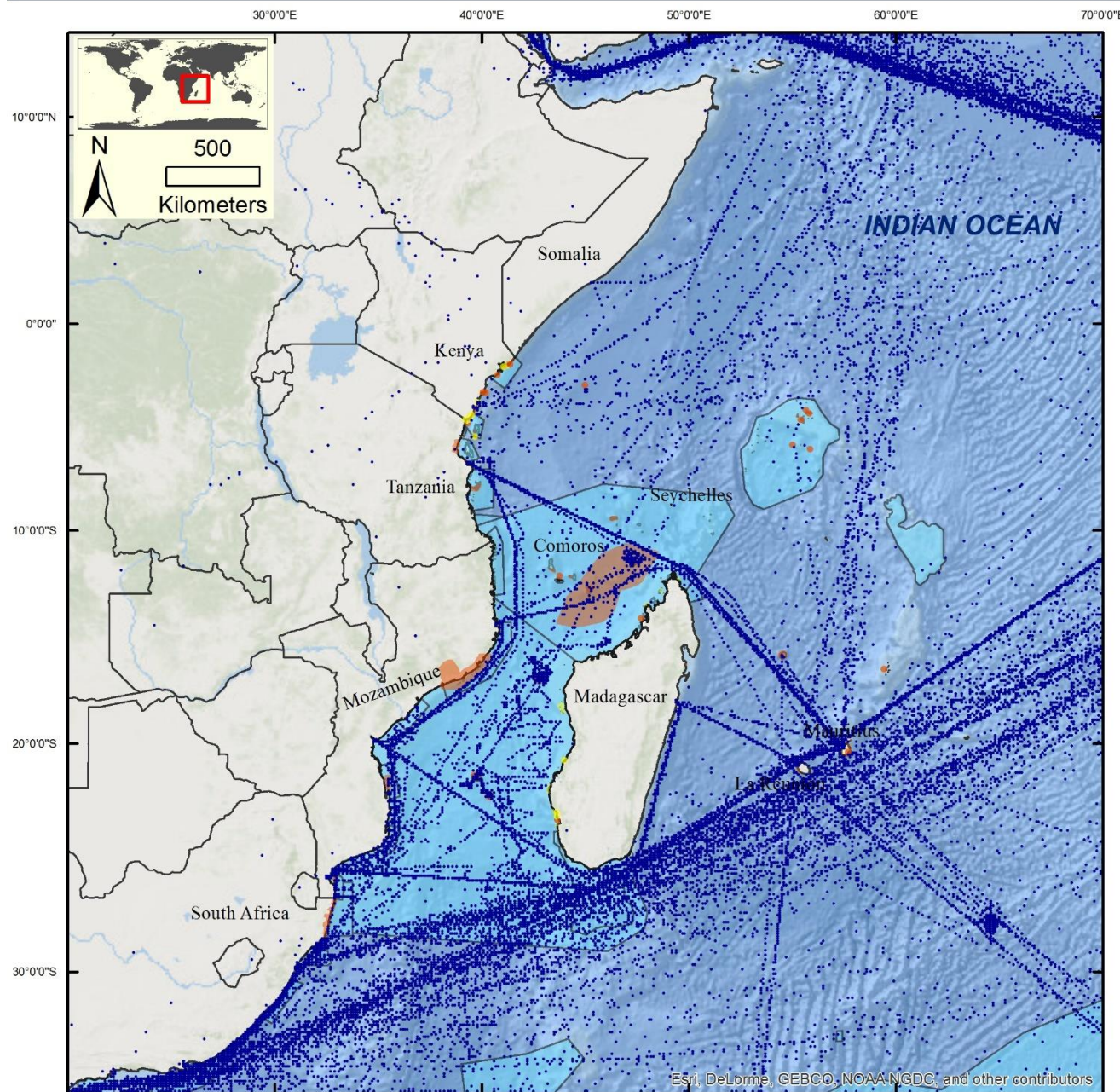
ReefBase: A Global Information System for Coral Reefs. December, 2015. <http://www.reefbase.org>

Author : E. Crochelet - Date: 12/2015 - Map n° PIP-1-1



Protected Areas - EBSA - Commercial shipping

MANAGING THE COMPLEXITY



LEGEND:

Protected areas

Point locations

- Marine Protected Area
- Locally Managed Marine Area

Polygon locations

- Marine Protected Area
- Locally Managed Marine Area

Ecologically or Biologically Significant Marine Areas

- EBSA

Commercial shipping

- Commercial shipping

DATA SOURCES:

MPAs - LMMAs: Compiled from various sources including the World Database of Protected Areas (WDPA)*, local agencies and personal knowledge.

*IUCN and UNEP-WCMC (2015), The World Database on Protected Areas (WDPA) [On-line], Cambridge, UK: UNEP-WCMC. Available at: www.protectedplanet.net.

Convention on Biological Diversity
URL: <https://www.cbd.int/ebsa/>

Commercial shipping: JCOMMOPS (2014) - Joint WMO-IOC Technical Commission for Oceanography and Marine Meteorology (JCOMM) in-situ Observing Platform Support centre (JCOMMOPS)

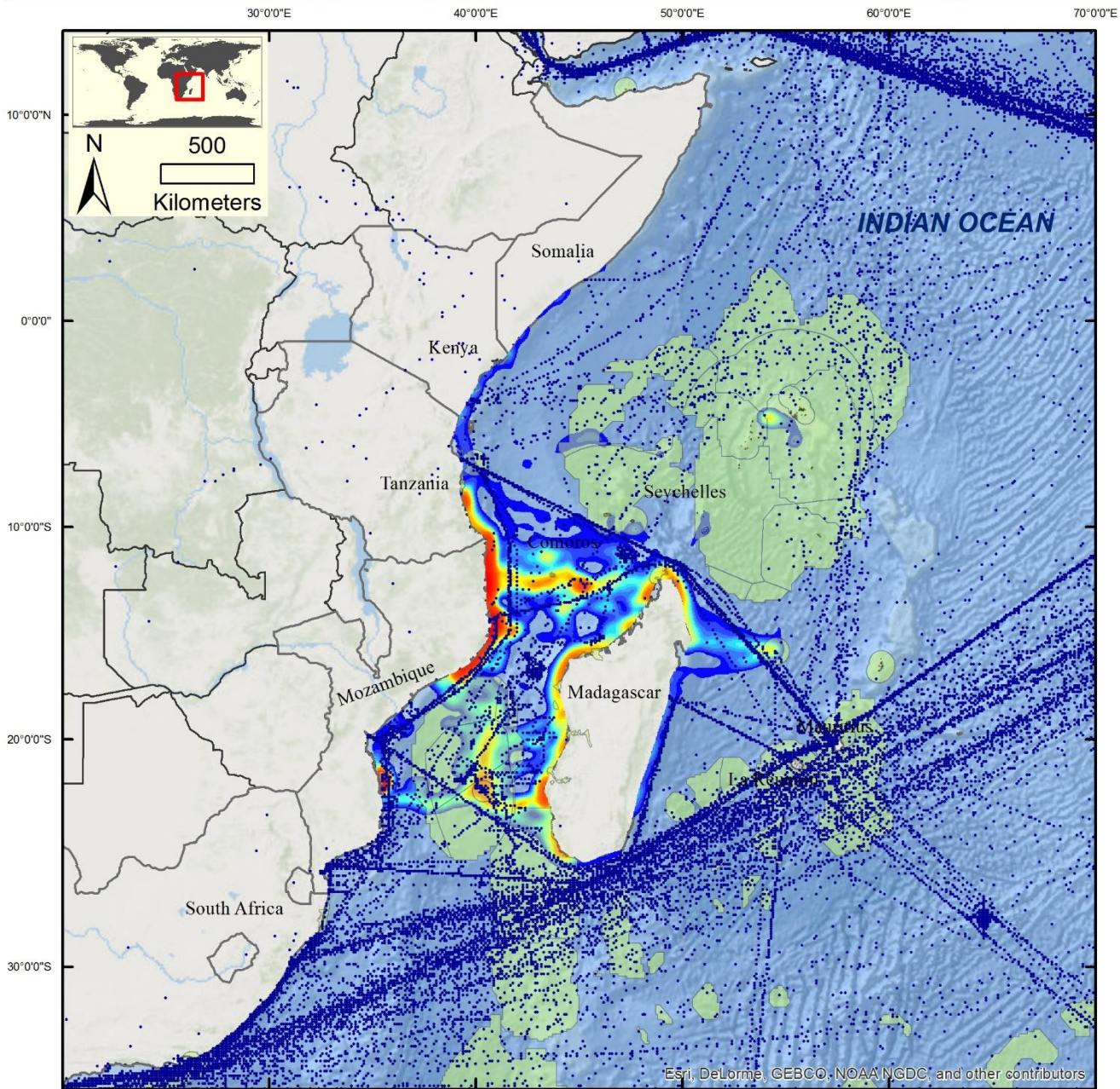
Author : E. Crochelet - Date: 12/2015 - Map n° MSP-4



Esri, DeLorme, GEBCO, NOAA-NGDC, and other contributors

Commercial shipping & Regional utilization distribution of female green turtles in post-nesting migration & IBAs

MANAGING THE COMPLEXITY



LEGEND:

Commercial shipping
 ● Commercial shipping

Regional utilization distribution of female green turtles in post-nesting migration

Value
 High : 95
 Low : 5

Important Bird and Biodiversity Areas
 IBAs

DATA SOURCES:

Commercial shipping: JCOMMOPS (2014) - Joint WMO-IOC Technical Commission for Oceanography and Marine Meteorology (JCOMM) in-situ Observing Platform Support centre (JCOMMOPS)

Ifremer/Kélonia. DYMITILE project. Suivis des migrations des tortues vertes par balises Argos. Funded by Ifremer, Kélonia, DEAL Réunion et Mayotte, Région Réunion, FFEM, Fondation total, CA, ARGOS/CLS, ANR, Collectivité Départementale de Mayotte, ADSEI. From Dalleau 2013, Bourjea et al in prep.

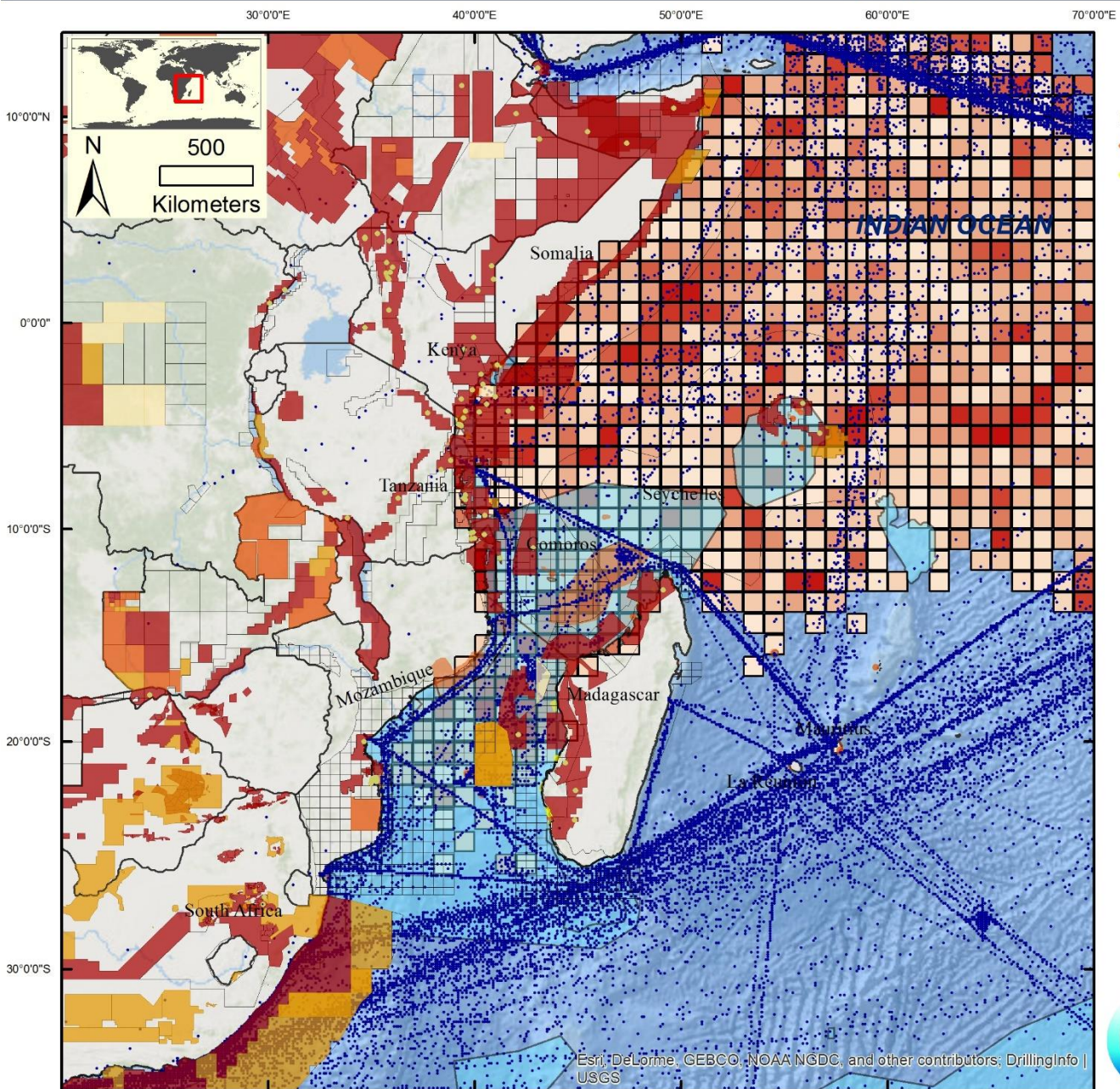
BirdLife International (2015): Important Bird and Biodiversity Area factsheet: Indian Ocean.

Author : E. Crochelet - Date: 12/2015 - Map n° MSP-3



Esri, DeLorme, GEBCO, NOAA NGDC, and other contributors

MANAGING THE COMPLEXITY



LEGEND:

- Protected areas**
- Point locations**
 - Marine Protected Area
 - Locally Managed Marine Area
 - Polygon locations**
 - Marine Protected Area
 - Locally Managed Marine Area

Ecologically or Biologically Significant Marine Areas

EBSA

- Commercial shipping**
- Commercial shipping

Oil and Gas activities

Planned Wells

Monthly catches of tropical tunas:

Thunnus albacares, Thunnus obesus, Katsuwonus pelamis

0 +1000 metric tons

Statistical unit 1° square
Purse seiner - All fishing mode

Contracts status

- Open
- Under negotiation
- Application
- Pre-award
- Force Majeure
- Contract

DATA SOURCES:

MPAs - LMMAs: Compiled from various sources including the World Database of Protected Areas (WDPA)*, local agencies and personal knowledge.

*IUCN and UNEP-WCMC (2015), The World Database on Protected Areas (WDPA) [On-line], Cambridge, UK: UNEP-WCMC. Available at: www.protectedplanet.net.

Convention on Biological Diversity. URL: <https://www.cbd.int/ebsa/>

Commercial shipping: JCOMMOPS (2014) - Joint WMO-IOC Technical Commission for Oceanography and Marine Meteorology (JCOMM) in-situ Observing Platform Support centre (JCOMMOPS)

ALES (2015). Global Drilling Info. USGS. Restricted for WWF use only. Data were downloaded on May 26, 2015.

IOTC Secretariat database (2014).

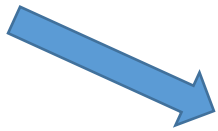
Author : E. Crochelet - Date: 12/2015 - Map n° MSP-2

Esri, DeLorme, GEBCO, NOAA NGDC, and other contributors; DrillingInfo | USGS



ICZM/MSP

AGENDA 2030



Marine Fishery and Aquaculture



1 NO POVERTY 3 GOOD HEALTH AND WELL-BEING 2 ZERO HUNGER

Marine and coastal Tourism



8 DECENT WORK AND ECONOMIC GROWTH 14 LIFE BELOW WATER

Biotechnology and bioproducts



3 GOOD HEALTH AND WELL-BEING 9 INDUSTRY, INNOVATION AND INFRASTRUCTURE

Marine Mining



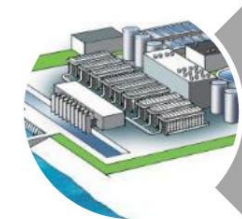
9 INDUSTRY, INNOVATION AND INFRASTRUCTURE 8 DECENT WORK AND ECONOMIC GROWTH

Marine Construction and Marine equipment manufacturing



9 INDUSTRY, INNOVATION AND INFRASTRUCTURE 8 DECENT WORK AND ECONOMIC GROWTH

Desalination



6 CLEAN WATER AND SANITATION

Offshore oil and gas



7 AFFORDABLE AND CLEAN ENERGY

Marine research and development, ocean literacy




9 INDUSTRY, INNOVATION AND INFRASTRUCTURE 4 QUALITY EDUCATION

Marine administration, Security, safety,



14 LIFE BELOW WATER 16 PEACE, JUSTICE AND STRONG INSTITUTIONS

Ports and shipping industry



9 INDUSTRY, INNOVATION AND INFRASTRUCTURE

Renewable marine energy



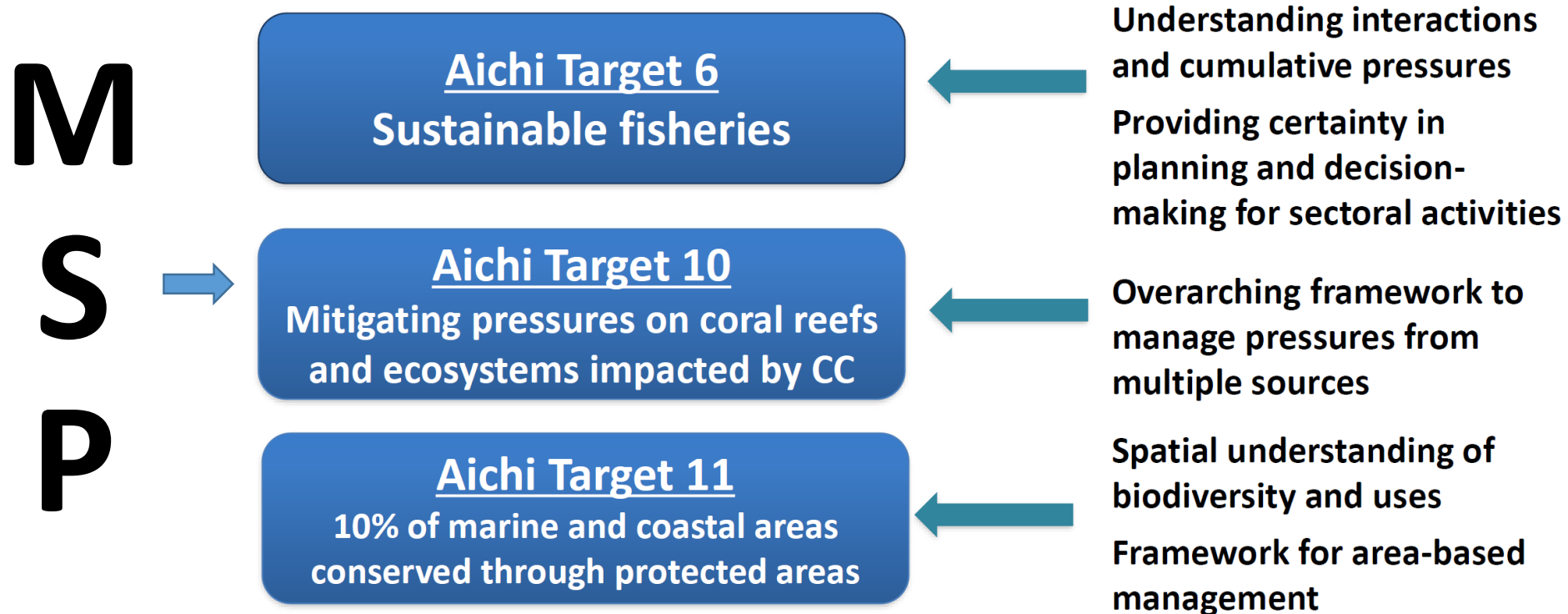
13 CLIMATE ACTION 7 AFFORDABLE AND CLEAN ENERGY

Marine business services

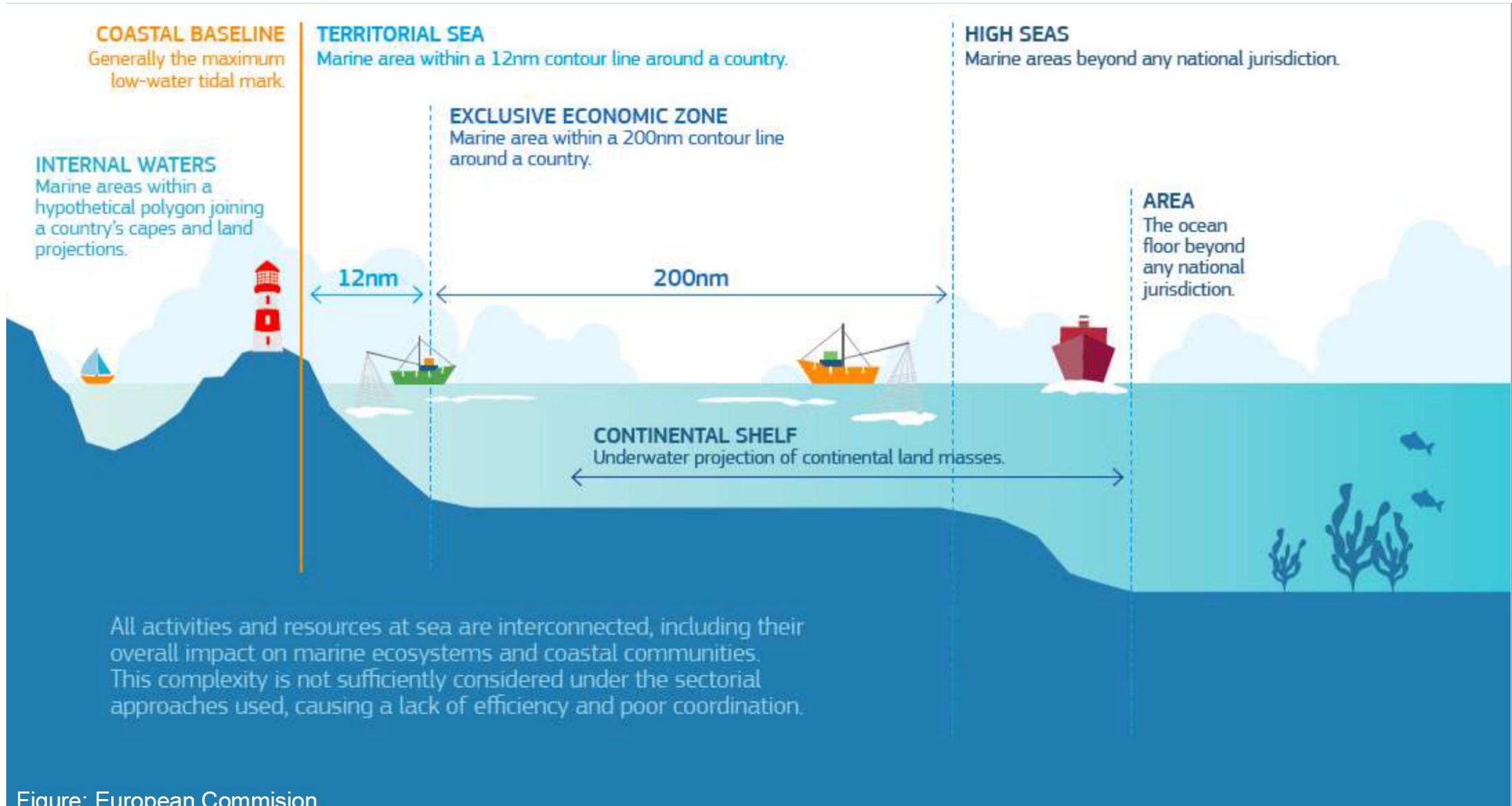


8 DECENT WORK AND ECONOMIC GROWTH 7 AFFORDABLE AND CLEAN ENERGY

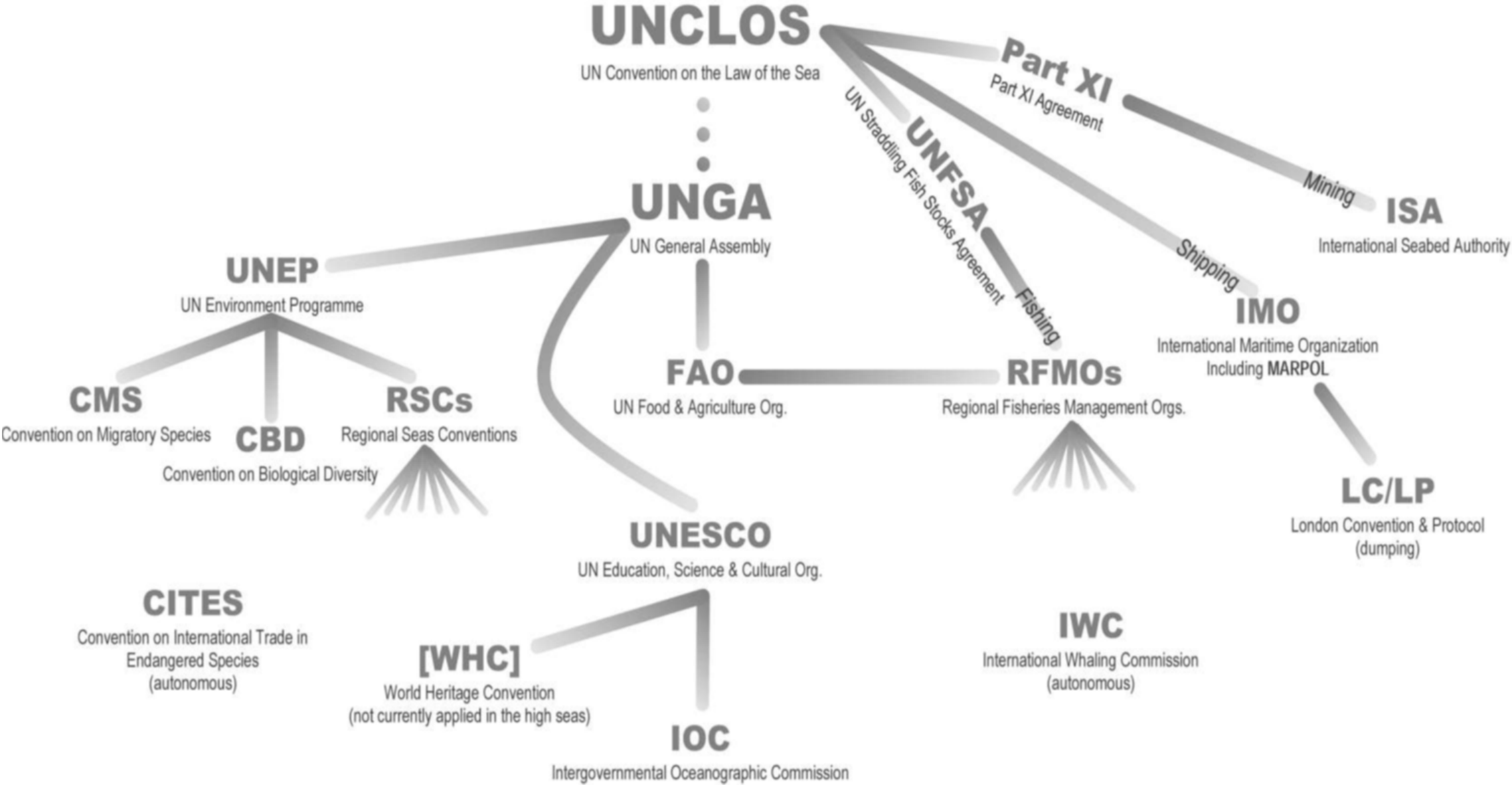
CDB COP 13 encouraged Parties in the implementation of MSP: to link closely to existing efforts to implement **integrated marine and coastal area management**, marine protected areas and **other effective area-based** conservation measures, as well as **strategic** environmental assessments, environmental impact assessments, pollution management, fisheries management and management of other economic activities, including tourism (decision XIII/9)



DIFFERING RESPONSIBILITIES LOCAL – PROVINCIAL - NATIONAL – REGIONAL – GLOBAL ...



BUT ALSO AT THE LEVEL OF GLOBAL OCEAN GOVERNANCE



MSP IN THE WESTERN INDIAN OCEAN

A long maturation process (more than 10 years ...)

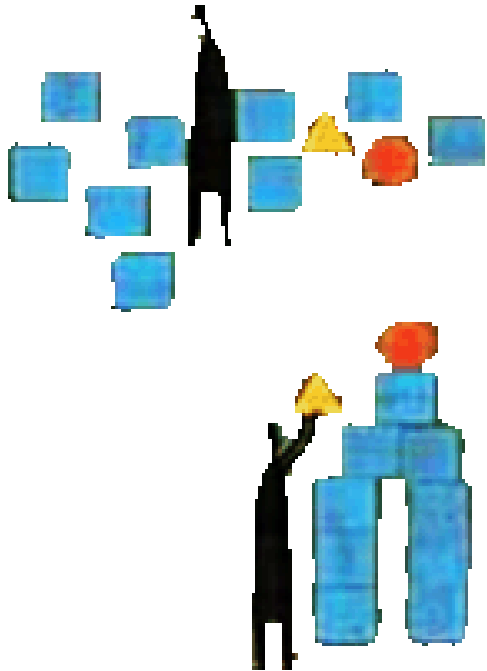
Started with Conservation (MPAs) and Fisheries issues ...

Some countries already engaged national MSP Processes, that are at different stages, other are in the inception phase.

A cross border initiative envisaged (North Mozambique Channel)



STRENGTHENING THE REGIONAL DYNAMIC FOR MSP

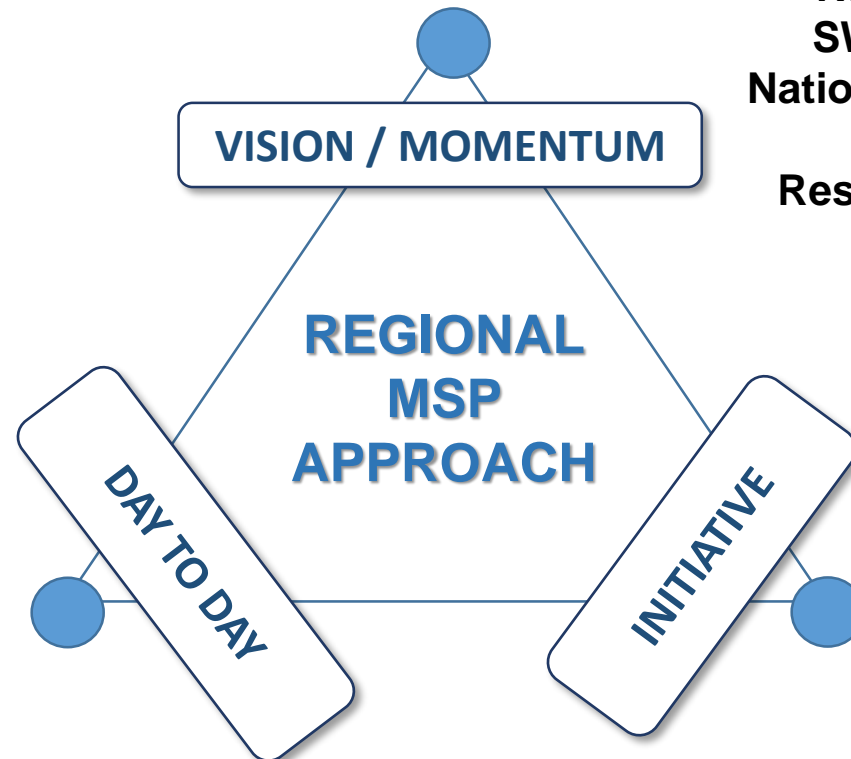


ON THE GROUND ACTIVITIES

Networking
Workshops – meetings
Interpersonal contacts
Relations and exchange
Between stakeholders

FORMAL ENGAGEMENT

Global and multilateral level
Nairobi Convention
SWIOFC, IOC, etc...
National legal frameworks
and Policies
Resolutions, Decisions



REGIONAL/CROSS BORDER COOPERATION NETWORKS and INITIATIVES

WIOMSA
Joint initiatives
Soft regulations
Cross border MSP
Regional projects and programs

WIO REGIONAL APPROACH FOR MSP SOME GUIDING PRINCIPLES ...

Land – Sea Integration (ridge to reef and beyond...)

Linking EEZ and ABNJ ... Ocean continuum

A step by step, structured (validation steps)
and iterative process ...

- Respecting subsidiarity and countries sovereignty ...
- Based on prospective and future-oriented approach ...
- Considering the response to capacity needs as a priority and a crucial outcome of the process

An M&E framework based on regional PEER review

NEEDS ...



A word cloud of project needs on a blue background. The words are in various sizes and colors (white, yellow, orange, red, green, purple). The largest word is 'regional' in white. Other prominent words include 'training' in yellow, 'capitalisation' in green, and 'MSP' in purple. Smaller words include 'monitoring', 'organisation', 'pilot', 'champion', 'national', 'dedicated', 'protocol', 'raising', 'collaboration', 'trainers', 'Erasmus', 'building', 'case', 'projects', 'learnt', 'team', 'communication', 'tools', 'baseline', 'interests', 'studies', 'databases', 'between', 'Capacity', 'lessons', 'progresses', and 'tracking'.

training
monitoring organisation
processes awareness
pilot champion national
dedicated protocol
capitalisation raising
regional
collaboration trainers Erasmus
learnt team building case projects
communication tools
baseline interests studies
databases between Capacity
lessons MSP
progresses tracking

WIO REGIONAL APPROACH FOR MSP SOME ISSUES TO ADDRESS ...

Need for a consensual ENTRY POINT to avoid issues and more delays due to the complexity of MSP (*let's move forward !*)

Facing issues related to accessibility (or quality) of some sectoral data ...

Data heterogeneity and data sharing protocols/agreements

Regional support to MSP should have to contribute to the progresses of national MSP initiatives.

No one model fits all the situations taking into account the diversity of governance dispositions in the region

TOWARD AN EFFECTIVE REGIONAL SUPPORT TO MSP

Marine and coastal biodiversity, habitats and cultural heritage may be a convenient entry point, taking advantage of:

Relative availability of data, studies and models,

Historical regional Cooperation – WIOMSA

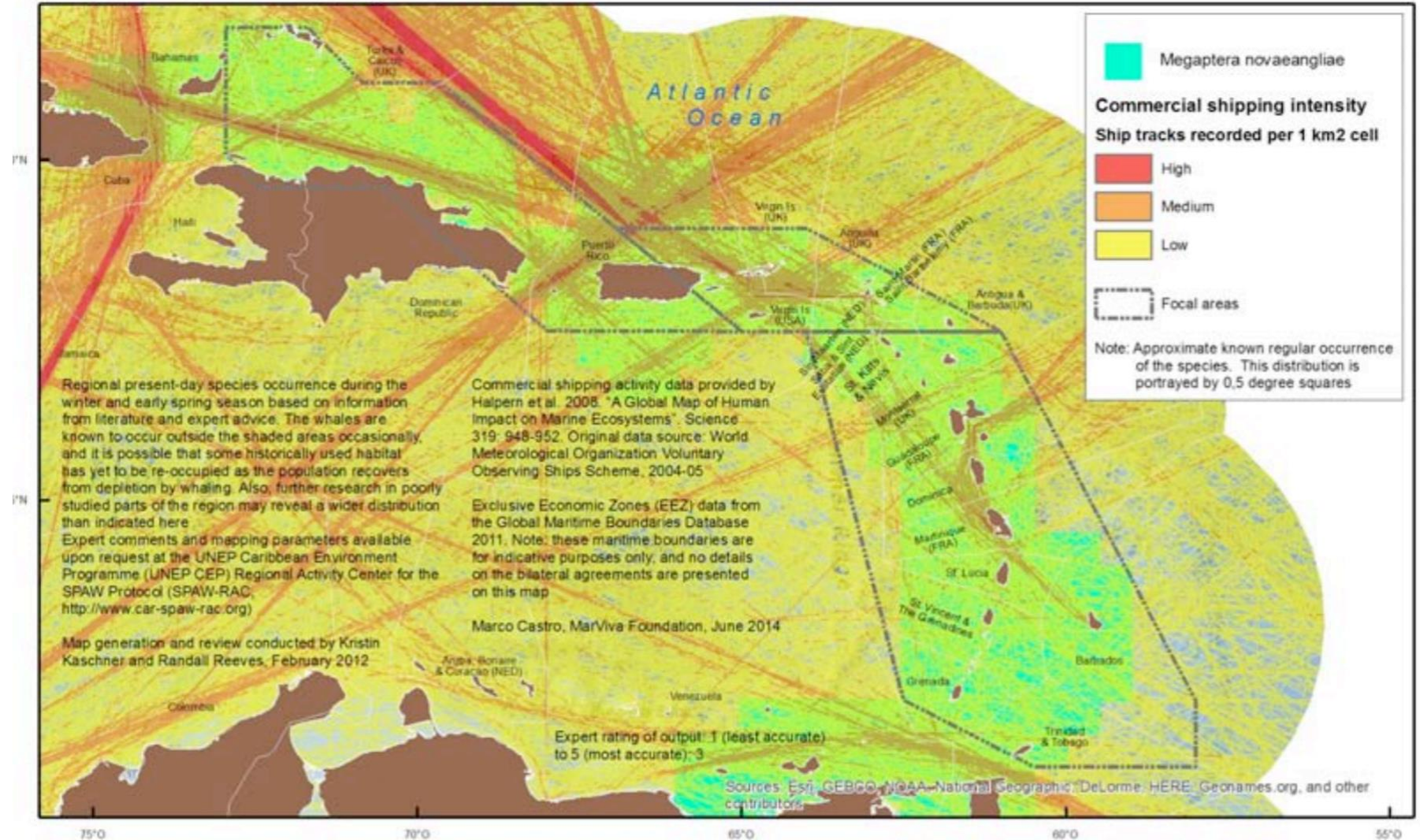
Importance of common heritage and shared natural resources

Building a shared and dynamic vision of regional biodiversity at different scales ... hotspots ...



TOWARD AN EFFECTIVE REGIONAL SUPPORT TO MSP

Humpback Whale vs. Commercial Shipping Routes (*Megaptera novaeangliae*)



BLUE ECONOMY AND RAPID DEVELOPMENT CONTEXT

All the countries of the region are facing rapid development ...

MSP should be based on shared development scenarios 2030 – 2050 built on major demo-economic trends and climate change prospective.

This future-oriented approach should involve REC... Toward the identification of next relevant and consensual « sectors » to integrate in MSP development.



**NAIROBI
CONVENTION
DECISION CP8/10
Ocean and Blue
Economy**

Decision To *urge* Parties to apply blue or ocean economy approaches as pathways for sustained economic growth, food security, poverty eradication, job creation

To *urge* Contracting Parties to cooperate in improving the governance of areas beyond national jurisdiction, building on existing regional institutions including the Nairobi Convention and developing area based management tools such as marine spatial planning to promote the blue economy pathways in the Western Indian Ocean Region.

**NAIROBI
CONVENTION
DECISION CP8/13**

Decision CP8/13: Enhancing Cooperation, Collaboration and Support with Partners

To *agree* to establish additional partnerships, including with **regional economic communities**, such as the East Africa Community, -----and ecologically or biologically significant marine areas as well as sustainable ocean initiative on capacity building of the Convention on Biological Diversity (CBD);

AND To *invite* all Contracting Parties and request the Secretariat to collaborate with the Secretariat of the Convention on Biological Diversity, Western Indian Ocean Marine Science Association and other partners on capacity building, implementation and sharing of experiences on integrated marine spatial planning in support of blue economy;

PATHWAYS FOR A REGIONAL SUPPORT TO MSP

Data collection at national and regional scales (harmonization) ?
Data analysis and regional integration technical workshops ? Task forces ?
Debriefing/feedback/validation public sessions at each step to national and regional actors, decision makers and stakeholders ?

Regional support for aligned communication ?
Regional support for capacity building on key technical issues, especially to fast track national MSP processes ?
Implementation of common M&E framework based on regional peer review ?
Promote twinning between national MSP processes (mentoring with actors out of the region) ?

Exchanges with other RSC (Abidjan especially)



WORKING GROUPS

30' 4 QUESTIONS

1. From your point of view, what are the biodiversity thematic linked with MSP for which a regional support would be expected ?
2. What additional thematic appears really relevant and priority in your national context ?
3. What kind of regional support/activities would be expected, or welcomed from regional actors ?
4. What should be the next steps ? (pilot projects)

3 WORKING GROUPS:

- 1: TAKAMAKA Room: Somalia, Kenya, Tanzania
- 2: GRASS Room: Seychelles, South Africa, Mauritius
- 3: FLAMBOYANT Room: Comoros, Mozambique, France



THANK YOU