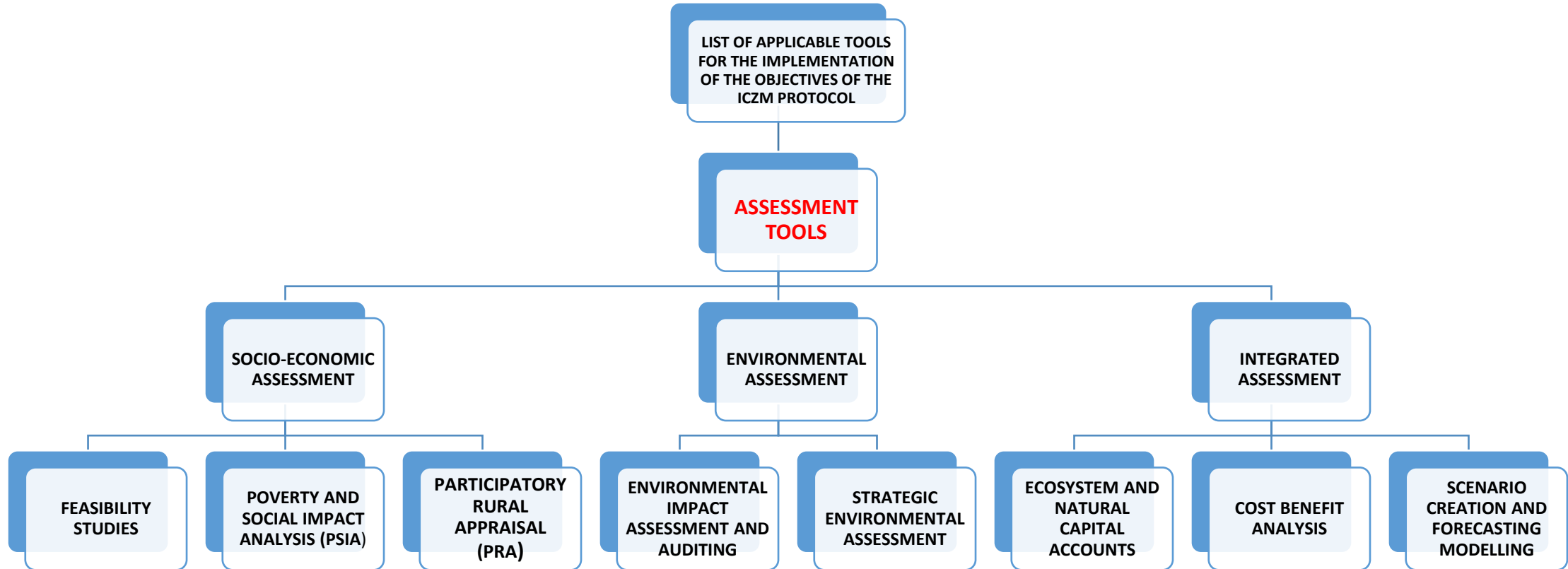
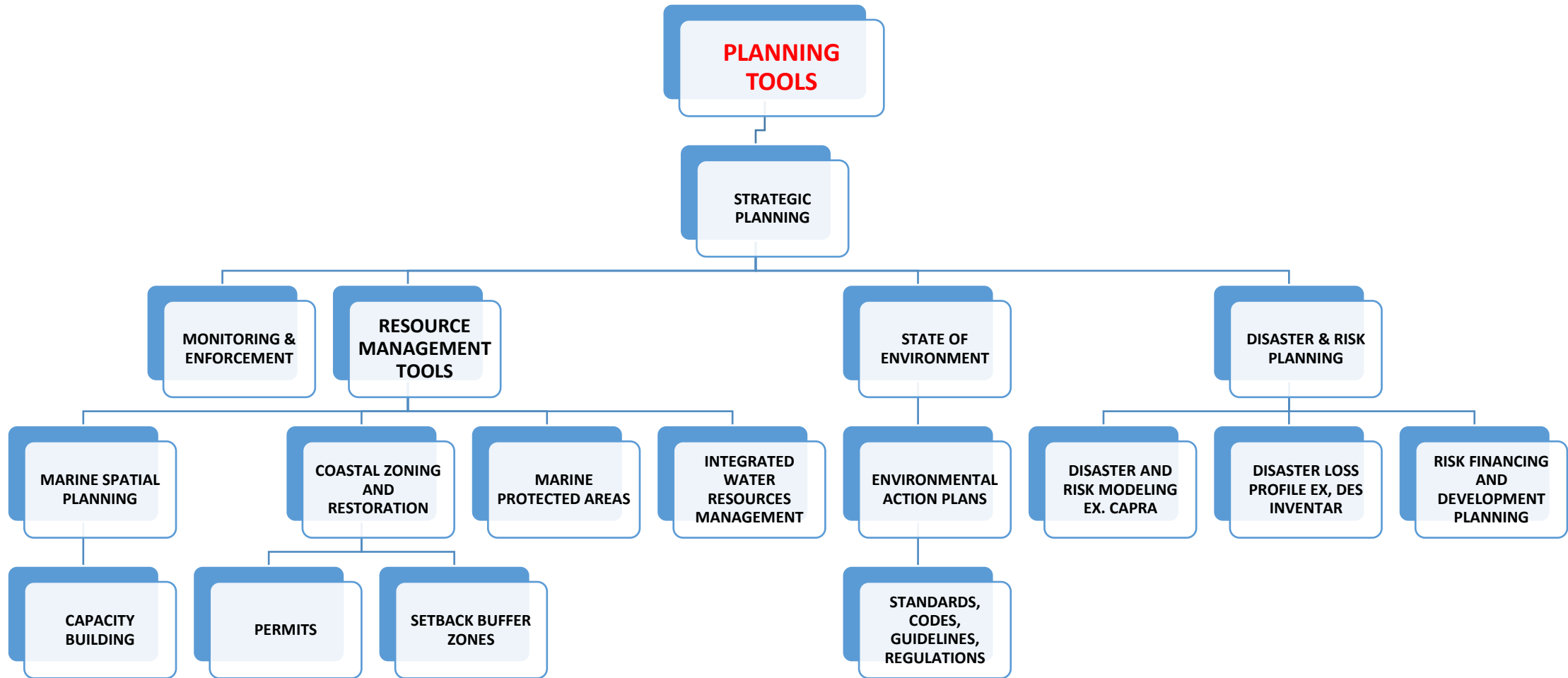


ASSESSMENT TOOLS



PLANNING TOOLS



TOOLS AND INSTRUMENTS

TOOLS

- A set of diverse methodologies or approaches used in integrated coastal zone management that are applied in data collection, planning, assessment, integration, implementation, response, or evaluation processes.

INSTRUMENTS

- A set of policy, planning, legal, institutional, economic and technology based measures aimed at implementing the purpose, goals, principles and objectives of the ICZM Protocol.

DEFINITION OF VARIOUS INSTRUMENTS

LEGAL INSTRUMENTS

- International treaties, conventions and protocols or national laws, regulations, standards and other measures that regulate the application of integrated coastal zone management at the global, regional or at the national level.

PLANNING INSTRUMENTS

- Strategic measures aimed at guiding decision makers in the immediate and future allocation of interventions towards sustainable management of coastal resources in accordance with the objectives of the Protocol.

DEFINITION OF VARIOUS INSTRUMENTS

INSTITUTIONAL/ADMINISTRATIVE INSTRUMENTS

- Specific measures at guiding institutional mechanisms in implementing coastal resources management programmes and plans such as capacity building, mainstreaming environmental education and awareness, public-private partnership, public participation, information dissemination, and consultations.

MARKET BASED INSTRUMENTS

- These are a set of economic measures designed to provide both incentives and disincentives with the aim of promoting conservation and sustainable management of the coastal resources while preventing negative forms of exploitation, resource depletion, pollution and environmental degradation.

MONITORING ICZM IMPLEMENTATION – FRAMEWORK INDICATORS

- Measuring Consensus Building at the local, national, regional and the global level.
- Conflict Management
- Bargaining and Negotiations.
- Participatory Approaches.
- Sustainability Indicators – Resource Abundance; Value addition to Natural capital
- Impact indicators
- Performance indicators
- Integration indicators – Multidisciplinary management (involving all sectors – at policy, legislative and sector levels and even at the regional level)