



Transport in Africa & Vulnerable Groups

By


Ms. Amanda A. Ngabirano
(MSc, Urban & Regional Planning)

Date: 28/10/2014

E-mail address: *amanda.ngabirano@gmail.com*

The Face of Transport in Africa

- Lack of affordability
- Lack of choice
- Lack of convenience
- Poor accessibility
- Social injustice
- Environmental damage
- Traffic congestion
- Traffic fatalities
-



Vulnerability
sets
in/Increases

Traffic Fatalities

Uganda;

- The fatalities constitute 39% of the **pedestrians** and 32% of the **passengers**.

Main causes:

1. Human Factors
2. Road Conditions
3. Vehicle conditions
4. Weather condition



Source: (Uganda Police Report, 2013 and The New Vision, April 20, 2010)

Vulnerability

- People with Reduced Mobility (PRMs)
- Gender
- Social status
- Age
- Health



Main Vulnerable Groups



Major areas of vulnerability

Road Safety

Pollution

**Deprived human
development**

**Social
injustice**



- **Africa's Population Growth-By 2050; 1.1-2.4 billion (Women are a faster growing population)**
- **Rapid urbanization- Most cities at 5%**
- **Tremendous Transport sector growth**

Sustainable Transport

- The role of transportation is key for the quality of human lives
1. Safety
 2. Accessibility
 3. Choice
 4. Affordability
 5. Efficiency
 6. Convenience
 7. Freedom
 8. All-inclusiveness

Key Aspects

Hardware

**All-
inclusive
ness**

For ALL Modes



Software

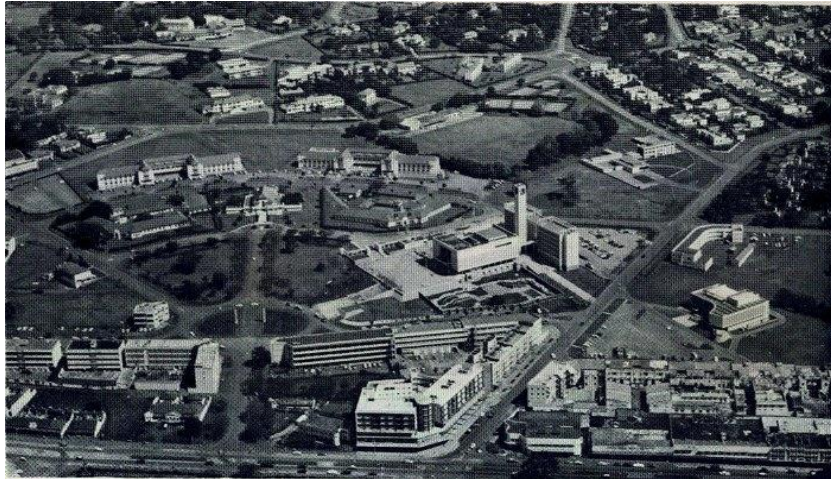
**All-
inclusive
ness**

People

Policy

Approach

What city do you want?



Vision, policy & planning

- Strong and inclusive transport planning policies
- Integrated land use & transport planning
- Prioritize the majority & more vulnerable
- Gather data through smart approaches
- Empower the vulnerable groups

Conclusion



**Smart Planning approaches
are more inclusive & effective**