



GPA

Global Programme of Action for the Protection of
the Marine Environment from Land-based Activities

The **G**lobal **W**astewater **I**nitiative - **GW**I- *As a Response*

Dr. Birguy Lamizana

GPA/FMEB, UNEP



Why is there need for a GWI?

Wastewater is a global concern!

Poorly managed wastewater:

- Loss of ecosystem services & of economic opportunities
- Affects climate change - Wastewater-related emissions of methane (CH₄) & nitrous oxide (N₂O) **more harmful than CO₂.**

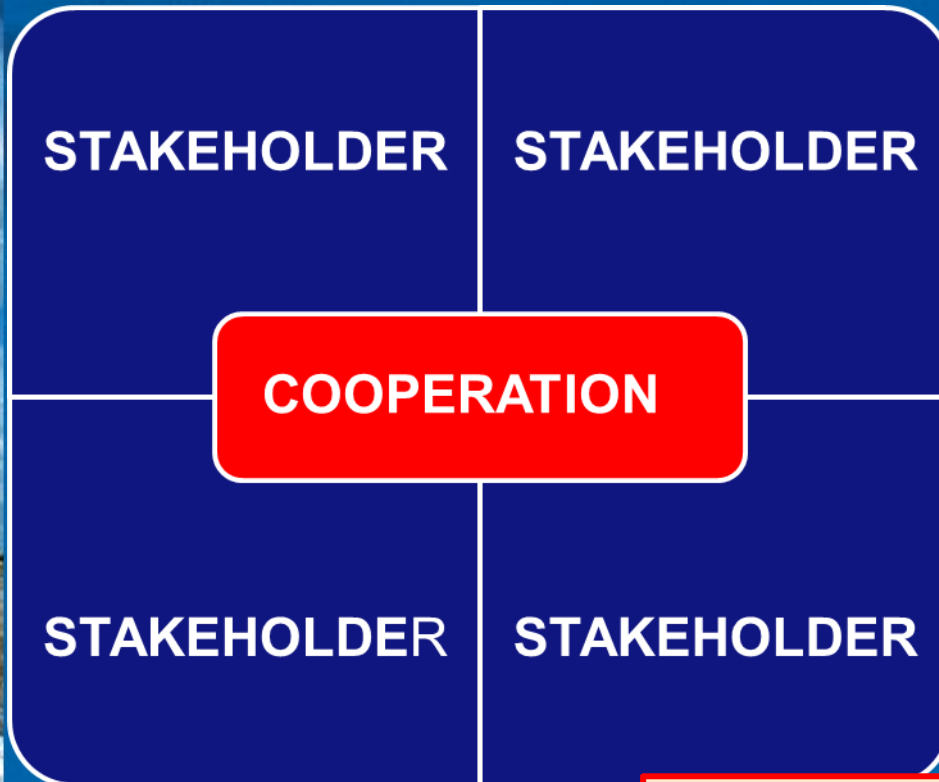
Properly managed wastewater:

- Huge source of water and nutrients for crop production-
- Wastewater sludge can be used as:
 - soil conditioner/fertiliser/construction materials,
 - to generate biogas & biofuel
- **But, there is a common perception that managing wastewater is a waste of energy and money.**
- Or **Wastewater: a resource not a waste**

Partnership? **Three key words!**

- Formal structures of relationships among individuals or groups, banded together for a **common purpose**.
- It is the commitment to a **common cause** – frequently purposive change –,
- **voluntary** confederations of independent agencies or community assemblies developing multi-purpose and long term alliances.
 - Peckham (2007, pp.2-3)

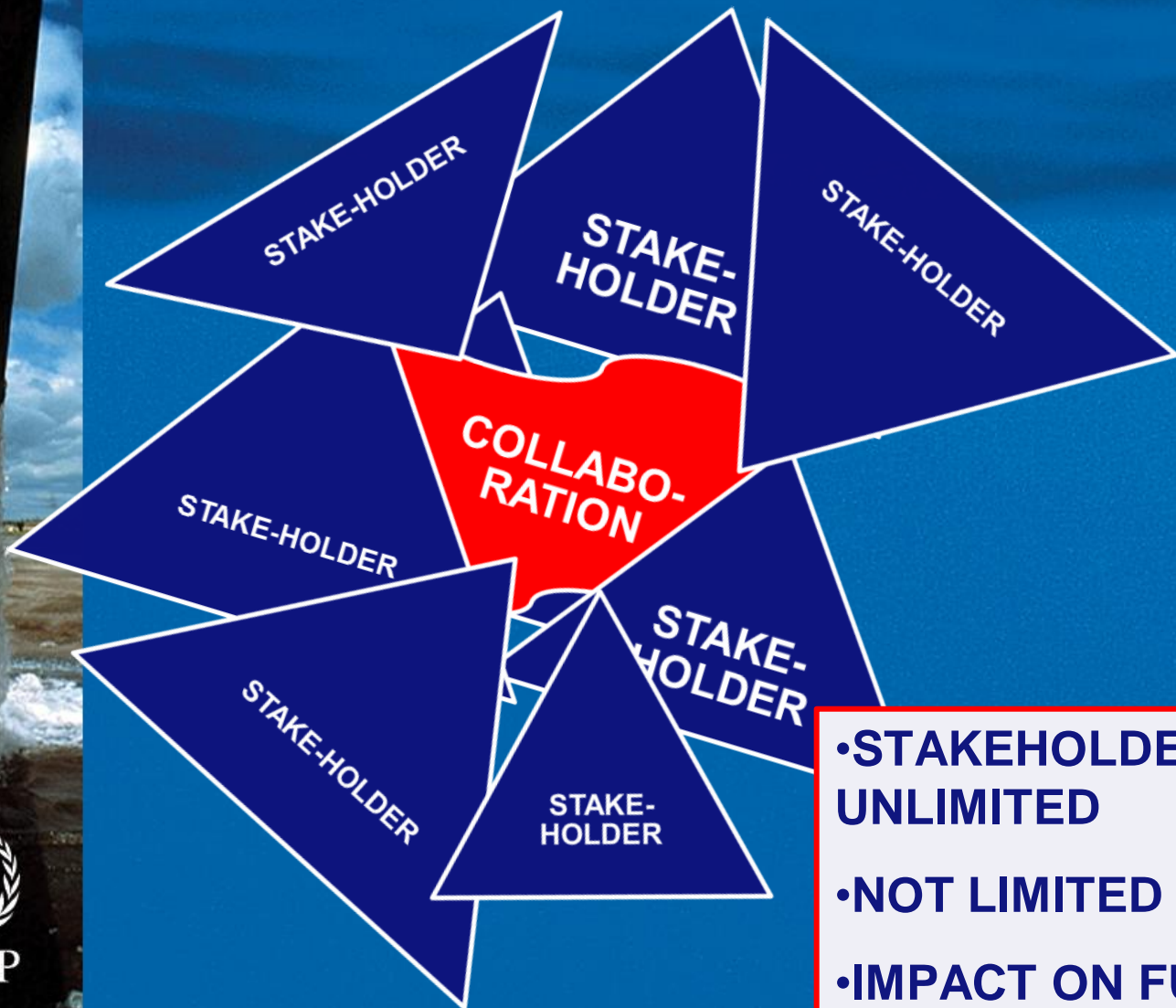
Partnership: Cooperation or collaboration?



- **STAKEHOLDERS LIMITED TO SYSTEM**
- **IMPLIES POWER STRUCTURE**
- **TIME IS THE PRESENT**
- **LIMITED IMPACT ON FUTURE**



Partnership: Cooperation or collaboration?



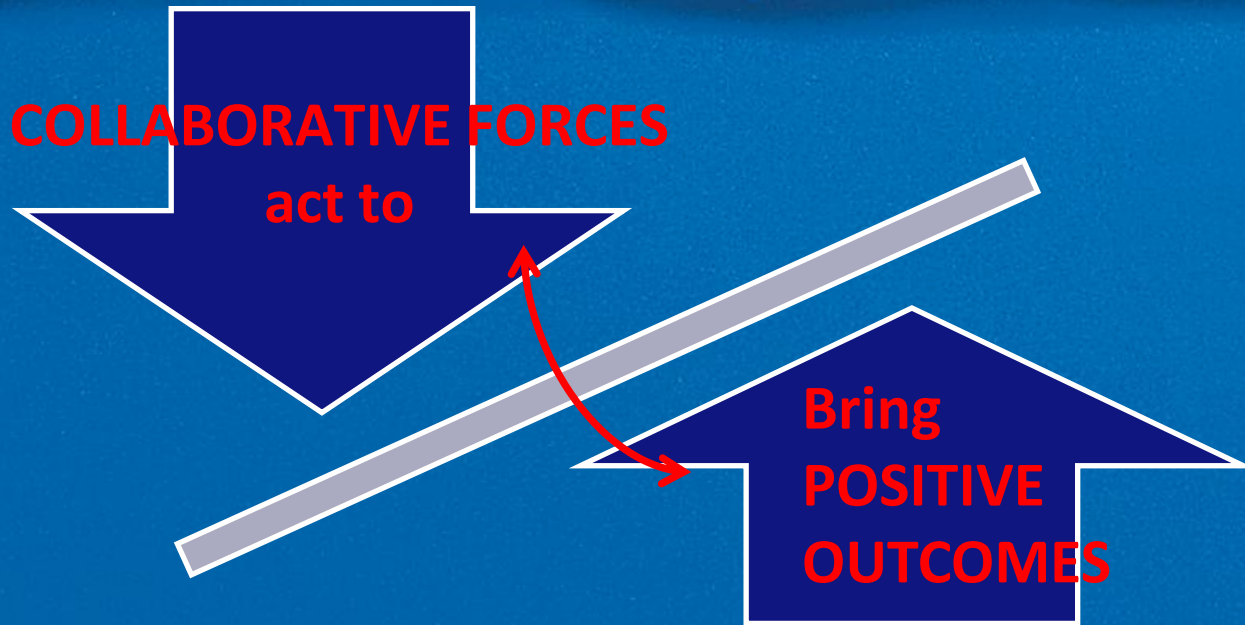
- STAKEHOLDERS VIRTUALLY UNLIMITED
- NOT LIMITED BY TIME
- IMPACT ON FUTURE



GPA

Global Programme of Action for the Protection of
the Marine Environment from Land-based Activities

PARTNERSHIP: *LEVERAGE IS THE KEY...*



UNEP



GPA

Global Programme of Action for the Protection of
the Marine Environment from Land-based Activities

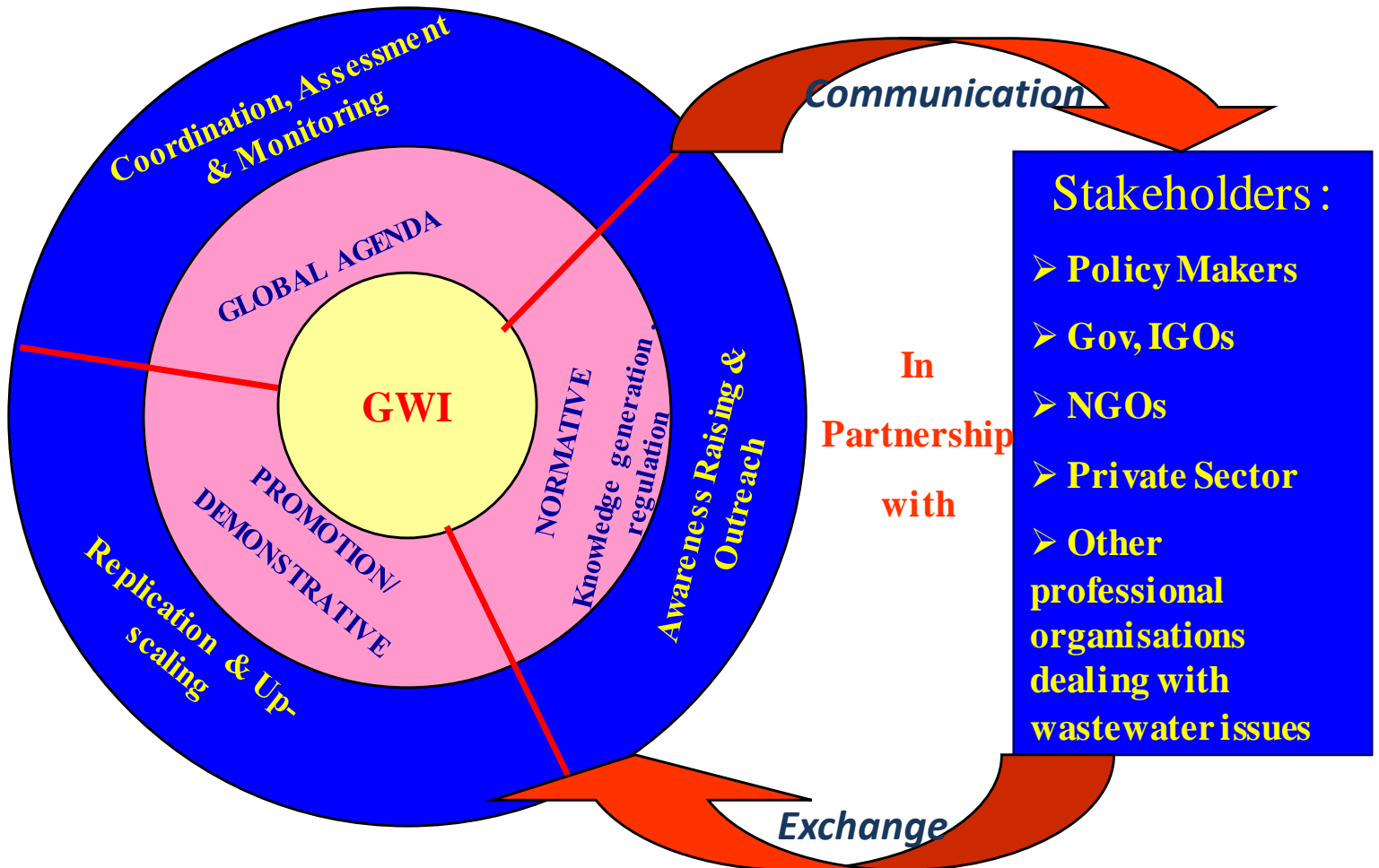
What is the GWI?

- A voluntary & multiple stakeholders platform:
 - TO:
- Facilitate cooperation, coordination, and synergy among the different players,
- Provide opportunity to work under thematic groups on major issues, challenges and potentialities of WW such as WW reuse, nutrient removal, biogas production, etc.
- Provide the foundations (including information, tools and policy mechanisms) for partnerships to initiate comprehensive, effective and sustained programmes addressing wastewater management.
- to encourage new investments in wastewater management



The focus?

- **Area 1: Establishing and strengthening the GWI to raise awareness on wastewater issues:**
 - Gather & disseminate available information;
 - Promote WW as a resource
- **Area 2: Promoting and demonstrating WW treatment technologies to reduce the levels & impacts of discharge of WW into water bodies:**
 - Promoting low-cost/new technology
 - Demonstration projects (e.g. Red Sea & Gulf of Aden)
 - WW technology transfer between China and Africa/Latin America
- **Area 3: Strengthening the normative basis for managing and monitoring the impacts of wastewater on the environment:**
 - Knowledge generation
 - Guidance & tools for decision-makers (economic valuation of WW, WW technology matrix,...)
- **Area 4: Contributing to global challenges and debates on wastewater issues.**
- **Component 5: Communication & outreach (cross-cutting)**



GWI: an evolving structure?

– Invitation sent out, May 2013:

- So far, 23 members (IGOs, UN agencies, Development banks, NGOs, Private sector, research Institute,...)

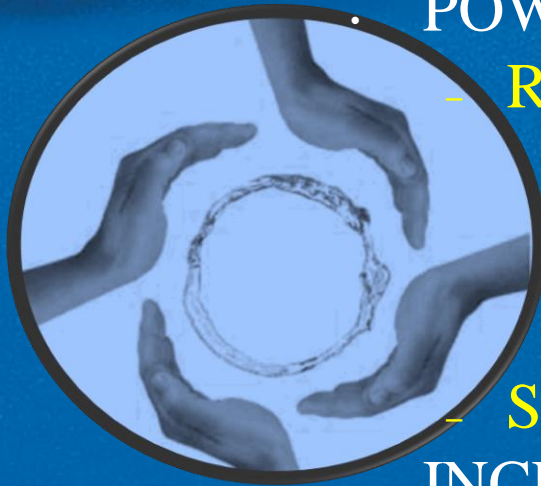
– Formal launch, Oct 2013

- dynamic and continually evolving, incorporating on-the-ground experiences
- Thematic groups
- Partnership Forum
- International Steering Committee
- UNEP/GPA serves as Secretariat (guidance; reporting; fund-raising; outreach etc.)

CHALLENGES...

- Limited funding and resources
- Lack of high level 'buy in'
- Failure to sustain long term commitment
- Difficulty in agreeing shared priorities and goals
- Managing size and complexity
- Institutional 'embedding'
- Dealing with professional cultures and 'silo' approaches
- Self-Interest
- Fear
- Sharing of control
- Poor communication and information sharing

BENEFITS OF PARTNERSHIP



- POWER IN THE MARKET
- RESOURCE USE EFFICIENCY
- SHARED EXPECTANCIES
- SHARED EXPERTISE
- SHARED INFORMATION
- SHARED AUTHORITY
- INCREASED LEVERAGE

Top tips

- good partnerships are ALWAYS two-way
- good partners have a trust relationship (this takes time)
- good partners are looking out for each other
 - ✓ Appoint champions and secure buy-in from the top
 - ✓ Define clear roles for partners and clear lines of responsibility
 - ✓ Build trust
 - ✓ Break down professional silos/ institutional boundaries
 - ✓ Ensure good communication
 - ✓ Demonstrate gains from partnership



Global Programme of Action for the Protection of
the Marine Environment from Land-based Activities

**Let's join hand and push for Strong
partnership for sustainable wastewater
management!**





Thank you for your
attention

